

Dell Performance Dock

WD19DCS

Quick Start Guide

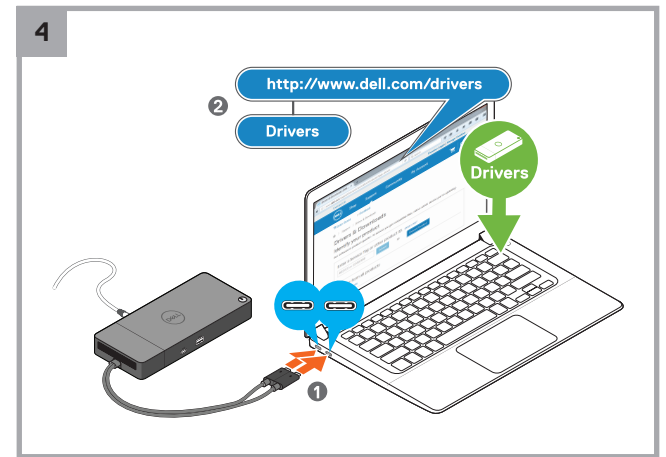
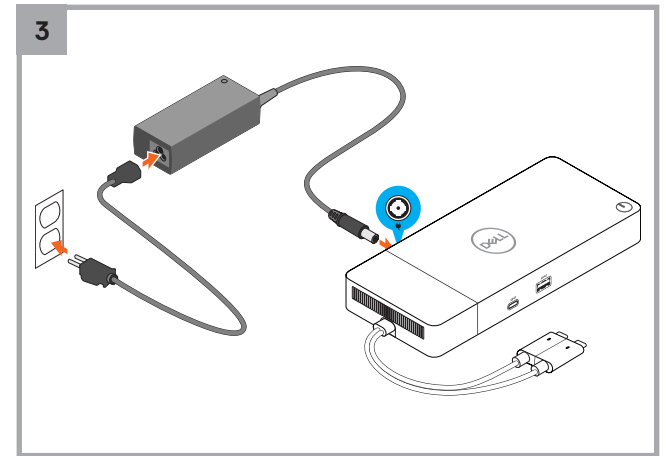
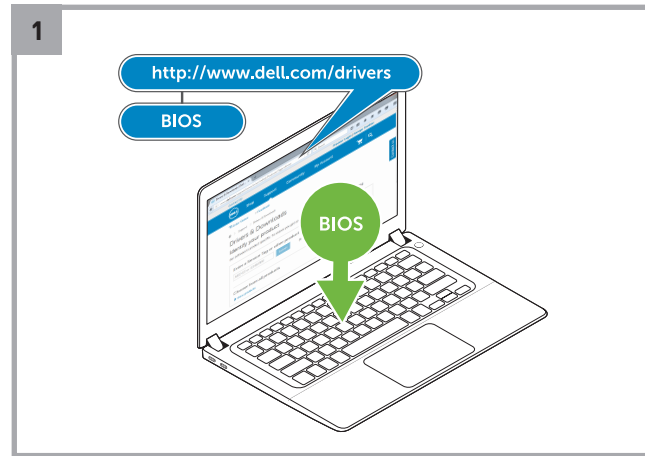
Important

Before connecting your Type-C dock, do the following:

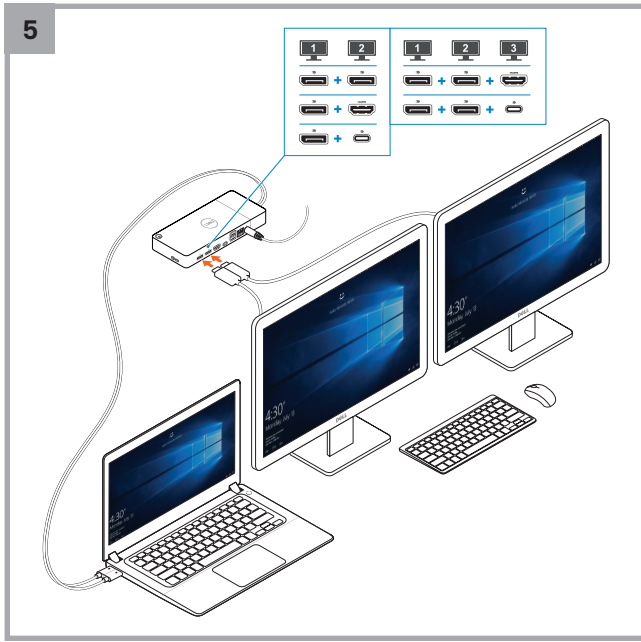
- See *Dell Docking Compatibility Guide* to verify if you use a single or dual USB-C cable. Deviation from recommendation may result in unexpected behavior. To check the guide, scan the QR code.



- Update your computer's BIOS, Realtek USB GBE Ethernet Controller driver, and other Dell Performance Dock WD19DCS drivers to the latest version available at www.dell.com/drivers. Older BIOS versions and drivers could result in the dock not being recognized by the computer or not functioning optimally. For more information, see the *User Guide*.



5



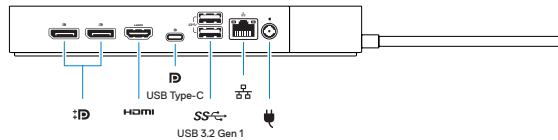
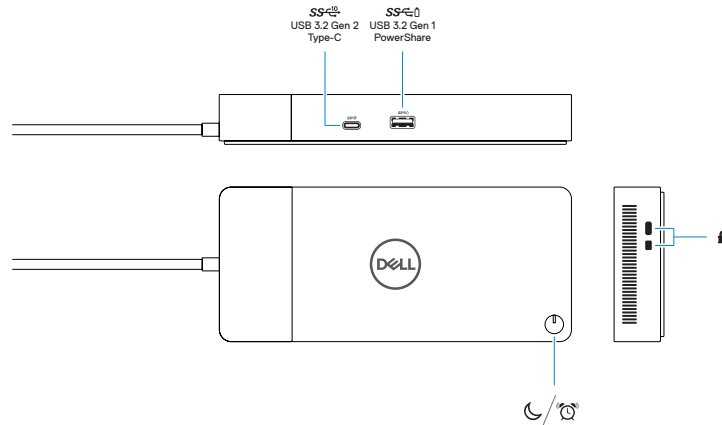
www.dell.com/support
www.dell.com/support/drivers
www.dell.com/contactdell
www.dell.com/regulatory_compliance

Regulatory model K20A

管制型号 | 安規型號
 認可モデル | 규정 모델

Regulatory type K20A001

管制类型 | 安規類型
 認可タイプ | 규정 유형



Información para NOM, o Norma Oficial Mexicana

La información que se proporciona a continuación se mostrará en los dispositivos que se describen en este documento, en conformidad con los requisitos de la Norma Oficial Mexicana (NOM):

Importador:

Dell México, S.A. de C.V
 Av. Javier Barros Sierra, No 540, Piso 10
 Col. Lomas de Santa Fe Delegación Álvaro Obregón
 Ciudad de México, C.F. 01219
 R.F.C.: DME9204099R6

Modelo	K20A
Voltaje de alimentación	100 V CA–240 V CA
Frecuencia	50 Hz–60 Hz
Consumo de corriente de entrada	3,5 A
Voltaje de salida	19,5 V CC
Consumo de corriente de salida	12,3 A / 12,31 A

商品名稱:	電腦擴充基座
型號:	WD19DCS (K20A)
額定電壓:	100 - 240 伏特
額定頻率:	50 - 60 赫茲
額定輸入電流:	3.5 安培
製造年份:	參考外箱標示或條碼標籤
製造號碼:	參考外箱條碼標籤
生產國別:	參考外箱標示
注意事項:	參考使用手冊
產品功能:	參考使用手冊
緊急處理方法:	參考使用手冊
進口商/委製商:	荷蘭商戴爾企業股份有限公司台灣分公司
進口商/委製商地址:	台北市敦化南路二段 218 號 20 樓
進口商/委製商電話:	00801-861-011

本產品符合臺灣RoHS標準CNS15663, 請見
www.dell.com/learn/tw/zh/twcorp1/envt-info-materials

SS-C- USB Type-C 連接埠: 讀寫 USB 3.2、5 V/1.5 A、5 Gbps

DP 表示為1個具備電源供應與DisplayPort功能的 USB-C 3.2 (10Gbps, 5V/3A output)



2023-08

© 2020-2023 Dell Inc. or its subsidiaries.



0N431WA01