

Dell USB-C Monitor

P2219HC/P2419HC/P2719HC

User's Guide

Model: P2219HC/P2419HC/P2719HC
Regulatory model: P2219HCb/P2419HCb/P2719HCt





NOTE: A NOTE indicates important information that helps you make better use of your computer.



CAUTION: A CAUTION indicates potential damage to hardware or loss of data if instructions are not followed.



WARNING: A WARNING indicates a potential for property damage, personal injury, or death.

Copyright © 2018-2020 Dell Inc. or its subsidiaries. All rights reserved. Dell, EMC, and other trademarks are trademarks of Dell Inc. or its subsidiaries. Other trademarks may be trademarks of their respective owners.

2020 – 11

Rev. A04

Contents

About Your Monitor	5
Package Contents	5
Product Features	6
Identifying Parts and Controls	7
Monitor Specifications	11
Plug-and-Play	25
LCD Monitor Quality and Pixel Policy	25
Setting Up the Monitor	26
Attaching the stand	26
Using the Tilt, Swivel, and Vertical Extension	27
Connecting Your Monitor	29
Organizing Your Cables	31
Removing the Monitor Stand	32
Wall Mounting (Optional)	33
Operating the Monitor	34
Turning on the Monitor	34
Using the Front Panel Controls	34
Front-Panel Button	36
Using the On-Screen Display (OSD) Menu	37




Troubleshooting	54
Self-Test	54
Built-in Diagnostics	56
Always On USB Type-C Charging	57
Common Problems.	59
Product Specific Problems	61
Universal Serial Bus (USB) Specific Problems	62
Appendix	63
Safety Instructions	63
FCC Notices (U.S. only) and Other Regulatory Information	63
Contacting Dell	63
EU product database for energy label and product information sheet.	63
Setting Up Your Monitor	64
Maintenance Guidelines.	66

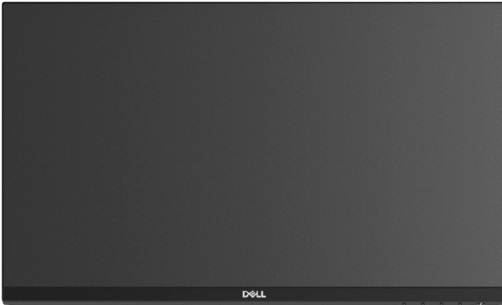

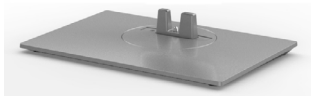



About Your Monitor





Package Contents

Your monitor ships with the components shown below. Make sure that you have received all the components and [contact Dell](#) if something is missing.

 **NOTE:** Some items may be optional and may not ship with your monitor. Some features or media may not be available in certain countries.

	Monitor
	Stand riser
	Stand base
	Power cable (varies by country)



	USB Type-C cable (C to C)
	DP cable
	Cable Tie
	<ul style="list-style-type: none"> • Quick Setup Guide • Safety, Environmental, and Regulatory Information

Product Features

The **Dell P2219HC/P2419HC/P2719HC** monitor has an active matrix, thinfilm transistor (TFT), liquid crystal display (LCD), and LED backlight. The monitor features include:

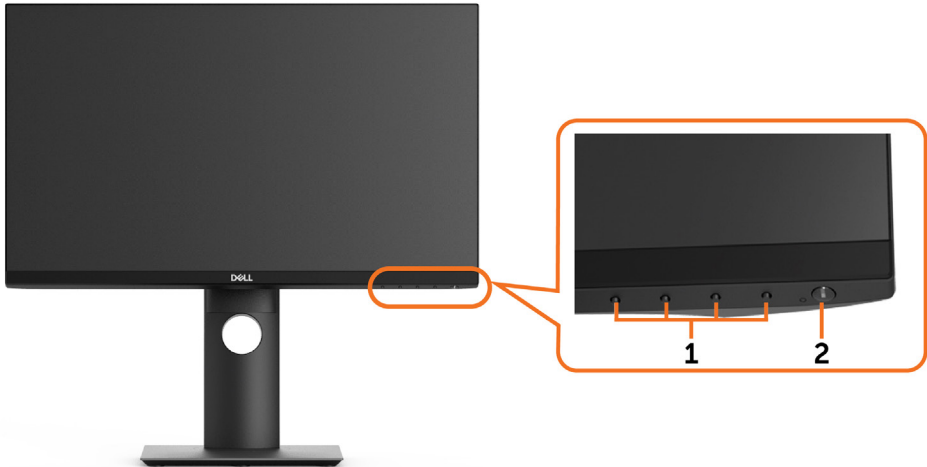
- **P2219HC:** 54.6 cm (21.5-inch) viewable area display (measured diagonally). 1920 x 1080 resolution with full-screen support for lower resolutions.
- **P2419HC:** 60.5 cm (23.8-inch) viewable area display (measured diagonally). 1920 x 1080 resolution with full-screen support for lower resolutions.
- **P2719HC:** 68.6 cm (27.0-inch) viewable area display (measured diagonally). 1920 x 1080 resolution with full-screen support for lower resolutions.
- Color gamut of 72% NTSC.
- Tilt, swivel, height and rotate adjustment capabilities.
- Removable stand and Video Electronics Standards Association (VESA™) 100 mm mounting holes for flexible mounting solutions.
- Digital connectivity with DisplayPort and HDMI.
- Equipped with 4 USB downstream ports.
- Single USB Type-C to supply power to compatible notebook while receiving video signal.
- Plug and play capable if supported by your system.
- Minimize eye discomfort with a flicker-free screen.
- The possible long-term effects of blue light emission from the monitor may cause damage to the eyes, including eye fatigue or digital eye strain. ComfortView feature is designed to reduce the amount of blue light emitted from the monitor to optimize eye comfort.
- On-screen display (OSD) adjustments for easy setup and screen optimization.
- Security lock slot.



- Stand lock.
- Energy Gauge shows the energy level being consumed by the monitor in real time.
- Arsenic-free glass and Mercury-free for the panel only.
- ≤ 0.3 W in Standby Mode.

Identifying Parts and Controls

Front view



Label	Description
1	Function buttons (For more information, see Operating the Monitor)
2	Power on/off button (with LED indicator)



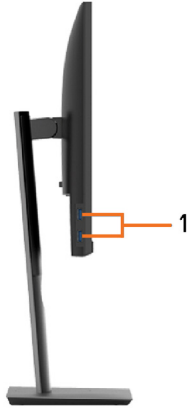
Back View



Label	Description	Use
1	VESA mounting holes (100 mm x 100 mm - behind attached VESA Cover)	Wall mount monitor using VESA-compatible wall mount kit (100 mm x 100 mm).
2	Regulatory label	Lists the regulatory approvals.
3	Stand release button	Releases stand from the monitor.
4	Security lock slot	Secures monitor with security lock (sold separately).
5	Barcode, serial number, and Service Tag label	Refer to this label if you need to contact Dell for technical support.
6	Cable-management slot	Use to organize cables by inserting them through the slot.



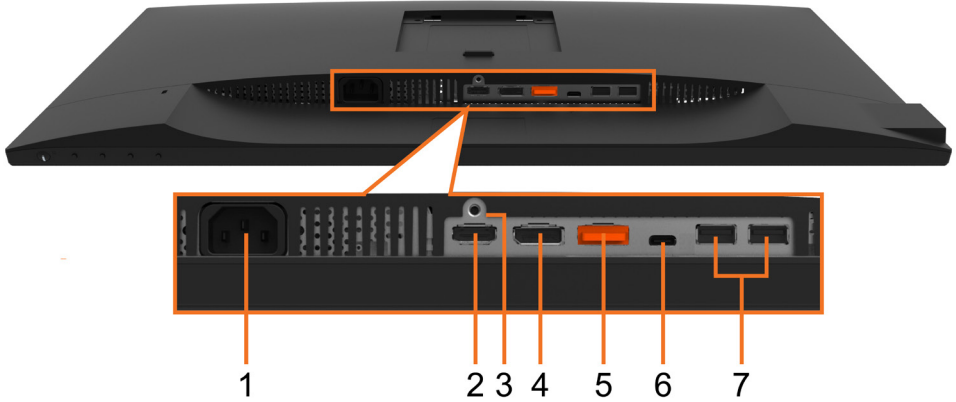
Side View




Label	Description	Use
1	USB downstream ports (2)	Connect your USB device. NOTE: You can only use this connector after you have connected the USB Type-C cable to the computer and USB Type-C connector on the monitor.



Bottom View



Label	Description	Use
1	Power connector	Connect the power cable.
2	HDMI connector	Connect your computer with HDMI cable (sold separately).
3	Stand lock feature	To lock the stand to the monitor using a M3 x 6 mm screw (screw not included).
4	DP connector (in)	Connect your computer with DisplayPort cable.
5	DP connector (out) 	DP output for MST (multi-stream transport) capable monitor. DP 1.1 monitor can only be connected as the last monitor in the MST chain. To enable MST, refer to instruction on section “ Connecting the Monitor for DP MST Function ”. NOTE: Remove the rubber plug when using DP out connector.
6	USB Type-C connector	You can attach the monitor to a computer using a USB Type-C cable to get the monitor experience as below: support data transmission speed up to USB 3.1. Display resolution up to 1920x1080@60Hz on DisplayPort™ 1.2 alternate mode. Power delivery of 20V/3.25A, 15V/3A, 9V/3A, 5V/3A. NOTE: USB Type-C is not supported on versions of Windows prior to Windows 10.
7	USB downstream ports (2)	Connect your USB device. NOTE: You can only use this connector after you have connected the USB Type-C cable to the computer and USB Type-C connector on the monitor.



Monitor Specifications

Model	P2219HC	P2419HC
Screen type	Active matrix - TFT LCD	
Panel Type	In-Plane Switching Technology	
Aspect ratio	16:9	
Viewable image dimensions		
Diagonal	546.10 mm (21.5 inches)	604.52 mm (23.8 inches)
Active Area		
Horizontal	476.06 mm (18.74 inches)	527.04 mm (20.75 inches)
Vertical	267.79 mm (10.54 inches)	296.46 mm (11.67 inches)
Area	127484.10 mm ² (197.60 inches ²)	156246.27 mm ² (242.18 inches ²)
Pixel pitch	0.248 mm × 0.248 mm	0.275 mm × 0.275 mm
Pixel per inch (PPI)	102	92
Viewing angle		
Horizontal	178° (typical)	
Vertical	178° (typical)	
Brightness	250 cd/m ² (typical)	
Contrast ratio	1000 to 1 (typical)	
Faceplate coating	Anti-Glare with 3H hardness	
Backlight	LED Edgelight system	
Response Time (Gray to Gray)	8 ms (NORMAL mode) 5 ms (FAST mode)	
Color depth	16.7 million colors	
Color gamut	72% (CIE1931) NOTE: Color gamut (typical) is based on CIE1976 (82%) and CIE1931 (72%) test standards.	
Connectivity	<ul style="list-style-type: none"> • 1 HDMI port • 1 DP(in) port • 1 DP(out) port • 1 USB Type-C port • 2 USB 2.0 downstream ports (rear) • 2 USB 3.0 downstream ports (side) 	
Border width (edge of monitor to active area)	5.62 mm (Top/Left/ Right)	5.38 mm (Top/Left/ Right)
	19.99 mm (Bottom)	20.31 mm (Bottom)



Adjustability	
Height adjustable stand	130 mm
Tilt	-5° to 21°
Swivel	-45° to 45°
Pivot	-90° to 90°
Dell Display Manager (DDM) Compatibility	Easy Arrange and other key features
Security	Security lock slot (cable lock sold separately)

Model	P2719HC
Screen type	Active matrix - TFT LCD
Panel Type	In-Plane Switching Technology
Aspect ratio	16:9
Viewable image dimensions	
Diagonal	686 mm (27 inches)
Active Area	
Horizontal	597.88 mm (23.54 inches)
Vertical	336.31 mm (13.24 inches)
Area	201073.02 mm ² (311.66 inches ²)
Pixel pitch	0.3114 mm x 0.3114 mm
Pixel per inch (PPI)	81.59
Viewing angle	
Horizontal	178° (typical)
Vertical	178° (typical)
Brightness	300 cd/m ² (typical)
Contrast ratio	1000 to 1 (typical)
Faceplate coating	Anti-Glare with 3H hardness
Backlight	LED Edgelight system
Response Time (Gray to Gray)	14 ms (typical) 8 ms (NORMAL mode) 5 ms (FAST mode)
Color depth	16.7 million colors
Color gamut	72% (CIE1931) NOTE: Color gamut (typical) is based on CIE1976 (82%) and CIE1931 (72%) test standards.



Connectivity	<ul style="list-style-type: none"> • 1 HDMI port • 1 DP(in) port • 1 DP(out) port • 1 USB Type-C port • 2 USB 2.0 downstream ports (rear) • 2 USB 3.0 downstream ports (side)
Border width (edge of monitor to active area)	6.0 mm (Top/Left/Right) 20.7 mm (Bottom)
Adjustability	
Height adjustable stand	130 mm
Tilt	-5° to 21°
Swivel	-45° to 45°
Pivot	-90° to 90°
Dell Display Manager (DDM) Compatibility	Easy Arrange and other key features
Security	Security lock slot (cable lock sold separately)

Resolution Specifications

Horizontal scan range	30 kHz to 83 kHz (automatic)
Vertical scan range	56 Hz to 76 Hz (automatic)
Maximum preset resolution	1920 x 1080 at 60 Hz
Video input capabilities (HDMI & DP playback)	480i, 480p, 576i, 576p, 720p, 1080i, 1080p



Preset Display Modes

Display Mode	Horizontal Frequency (kHz)	Vertical Frequency (Hz)	Pixel Clock (MHz)	Sync Polarity (Horizontal/Vertical)
VESA, 640 × 480	31.5	60.0	25.2	-/-
VESA, 640 × 480	37.5	75.0	31.5	-/-
IBM, 720 × 400	31.5	70.0	28.3	-/+
VESA, 800 × 600	37.9	60.0	40.0	+/+
VESA, 800 × 600	46.9	75.0	49.5	+/+
VESA, 1024 × 768	48.4	60.0	65.0	-/-
VESA, 1024 × 768	60.0	75.0	78.8	+/+
VESA, 1152 × 864	67.5	75.0	108.0	+/+
VESA, 1280 × 1024	64.0	60.0	108.0	+/+
VESA, 1280 × 1024	80.0	75.0	135.0	+/+
VESA, 1600 × 900	60.0	60.0	108.0	+/+
VESA, 1920 × 1080	67.5	60.0	148.5	+/+

MST Multi-Stream Transport (MST) Modes

MST Source Monitor	Maximum number of external monitors that can be supported
	1920 × 1080/60 Hz
1920 × 1080/60 Hz	1 (Use USB Type-C) 3 (Use DP)

NOTE: Maximum external monitor resolution supported is 1920x1080 60Hz only.

Electrical Specifications

Model	P2219HC/P2419HC
Video input signals	<ul style="list-style-type: none"> • HDMI 1.4, 600 mV for each differential line, 100 ohm input impedance per differential pair • DisplayPort 1.2, 600 mV for each differential line, 100 ohm input impedance per differential pair • USB Type-C, 600mV for each differential line, 90 ohm input impedance per differential pair
AC Input voltage/ frequency/ current	100-240 VAC / 50 or 60 Hz ± 3 Hz / 1.5A (typical)
Inrush current	<ul style="list-style-type: none"> • 120 V: 40 A (Max.) at 0 °C (cold start) • 240 V: 80 A (Max.) at 0 °C (cold start)



Model	P2719HC	
Video input signals	<ul style="list-style-type: none"> • HDMI 1.4, 600 mV for each differential line, 100 ohm input impedance per differential pair • DisplayPort 1.2, 600 mV for each differential line, 100 ohm input impedance per differential pair • USB Type-C, 600mV for each differential line, 90 ohm input impedance per differential pair 	
AC Input voltage/ frequency/current	100-240 VAC / 50 or 60 Hz \pm 3 Hz / 1.6A (typical)	
Inrush current	<ul style="list-style-type: none"> • 120 V: 30 A (Max.) at 0 °C (cold start) • 220 V: 60 A (Max.) at 0 °C (cold start) 	
Power Consumption		
	P2419HC	P2719HC
0.2 W (Off Mode) ¹	0.2 W (Off Mode) ¹	0.2 W (Off Mode) ¹
0.2 W (Standby Mode) ¹	0.2 W (Standby Mode) ¹	0.2 W (Standby Mode) ¹
14.2 W (On Mode) ¹	13.8 W (On Mode) ¹	13.8 W (On Mode) ¹
119 W (Max) ²	118.1 W (Max) ²	118.1 W (Max) ²
13.9 W (P _{on}) ³	15.5 W (P _{on}) ³	15.5 W (P _{on}) ³
45.3 kWh (TEC) ³	49.7 kWh (TEC) ³	49.7 kWh (TEC) ³

¹ As defined in EU 2019/2021 and EU 2019/2013.

² Max brightness and contrast setting with maximum power loading on all USB ports.

³ P_{on}: Power consumption of On Mode as defined in Energy Star 8.0 version.

TEC: Total energy consumption in kWh as defined in Energy Star 8.0 version.

This document is informational only and reflects laboratory performance. Your product may perform differently, depending on the software, components and peripherals you ordered and shall have no obligation to update such information. Accordingly, the customer should not rely upon this information in making decisions about electrical tolerances or otherwise. No warranty as to accuracy or completeness is expressed or implied.

 **NOTE:** These monitors P2419HC/P2719HC are ENERGY STAR certified.



This product qualifies for ENERGY STAR in the factory default settings which can be restored by “Factory Reset” function in the OSD menu. Changing the factory default settings or enabling other features may increase power consumption that could exceed the ENERGY STAR specified limit.



Physical Characteristics

Model	P2219HC	P2419HC
Signal cable type	<ul style="list-style-type: none"> • Digital: DisplayPort, 20 pins • Digital: HDMI, 19 pins • Digital: USB Type-C, 24 pins 	
Dimensions (with stand)		
Height (extended)	472.04 mm (18.58 inches)	486.11 mm (19.14 inches)
Height (compressed)	353.42 mm (13.91 inches)	356.11 mm (14.02 inches)
Width	487.3 mm (19.19 inches)	537.8 mm (21.17 inches)
Depth	166.0 mm (6.54 inches)	166.0 mm (6.54 inches)
Dimensions (without stand)		
Height	293.4 mm (11.55 inches)	322.15 mm (12.68 inches)
Width	487.3 mm (19.19 inches)	537.8 mm (21.17 inches)
Depth	41.3 mm (1.63 inches)	42.8 mm (1.69 inches)
Stand dimensions		
Height (extended)	400.80 mm (15.78 inches)	400.80 mm (15.78 inches)
Height (compressed)	353.42 mm (13.91 inches)	353.42 mm (13.91 inches)
Width	206.0 mm (8.11 inches)	206.0 mm (8.11 inches)
Depth	166.0 mm (6.54 inches)	166.0 mm (6.54 inches)
Base	206.0 mm x 166.0 mm (8.11 inches x 6.54 inches)	206.0 mm x 166.0 mm (8.11 inches x 6.54 inches)
Weight		
Weight with packaging	6.43 kg (14.18 lb)	7.26 kg (16.01 lb)
Weight with stand assembly and cables	4.99 kg (11.00 lb)	5.45 kg (12.02 lb)
Weight without stand assembly (For wall mount or VESA mount considerations - no cables)	3.05 kg (6.72 lb)	3.52 kg (7.76 lb)
Weight of stand assembly	1.64 kg (3.62 lb)	1.65 kg (3.63 lb)
Front frame gloss	2-4 (only front chin)	2-4 (only front chin)

Model	P2719HC
Signal cable type	<ul style="list-style-type: none"> • Digital: DisplayPort, 20 pins • Digital: HDMI, 19 pins • Digital: USB Type-C, 24 pins
Dimensions (with stand)	
Height (extended)	524.3 mm (20.64 inches)



Height (compressed)	394.3 mm (15.52 inches)
Width	609.9 mm (24.01 inches)
Depth	185.0 mm (7.28 inches)
Dimensions (without stand)	
Height	363.0 mm (14.29 inches)
Width	609.9 mm (24.01 inches)
Depth	42.8 mm (1.69 inches)
Stand dimensions	
Height (extended)	418.4 mm (16.47 inches)
Height (compressed)	371.0 mm (14.61 inches)
Width	245.0 mm (9.65 inches)
Depth	185.0 mm (7.28 inches)
Base	245.0 mm x 185.0 mm (9.65 inches x 7.28 inches)
Weight	
Weight with packaging	9.36 kg (20.64 lb)
Weight with stand assembly and cables	6.94 kg (15.30 lb)
Weight without stand assembly (For wall mount or VESA mount considerations - no cables)	4.67 kg (10.30 lb)
Weight of stand assembly	1.93 kg (4.25 lb)
Front frame gloss	2-4 (only front chin)



Environmental Characteristics

Model	P2219HC	P2419HC
Temperature		
Operating	0°C to 40°C (32°F to 104°F)	
Non-operating	<ul style="list-style-type: none"> • Storage: -20 °C to 60 °C (-4 °F to 140 °F) • Shipping: -20 °C to 60 °C (-4 °F to 140 °F) 	
Humidity		
Operating	20% to 80% (non-condensing)	
Non-operating	<ul style="list-style-type: none"> • Storage: 10% to 90% (non-condensing) • Shipping: 10% to 90% (non-condensing) 	
Altitude		
Operating	5,000 m (16,404 ft) (maximum)	
Non-operating	12,192 m (40,000 ft) (maximum)	
Thermal dissipation	<ul style="list-style-type: none"> • 403 BTU/hour (maximum) • NA BTU/hour (On Mode) 	<ul style="list-style-type: none"> • 407 BTU/hour (maximum) • 48.45 BTU/hour (On Mode)
Model	P2719HC	
Temperature		
Operating	0°C to 40°C (32°F to 104°F)	
Non-operating	<ul style="list-style-type: none"> • Storage: -20 °C to 60 °C (-4 °F to 140 °F) • Shipping: -20 °C to 60 °C (-4 °F to 140 °F) 	
Humidity		
Operating	20% to 80% (non-condensing)	
Non-operating	<ul style="list-style-type: none"> • Storage: 10% to 90% (non-condensing) • Shipping: 10% to 90% (non-condensing) 	
Altitude		
Operating	5,000 m (16,404 ft) (maximum)	
Non-operating	12,192 m (40,000 ft) (maximum)	
Thermal dissipation	<ul style="list-style-type: none"> • 402.97 BTU/hour (maximum) • 47.09 BTU/hour (On Mode) 	

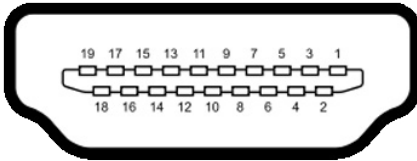


Compliant standards

ENERGY STAR Certified Monitor	yes (P2419HC/P2719HC only)
EPEAT	EPEAT registered where applicable. EPEAT registration varies by country. See www.epeat.net for registration status by country. (P2419HC/P2719HC only)
TCO Certified Displays	yes
RoHS Compliant	yes
BFR/PVC free Monitor (excluding external cables)	yes

Pin Assignments

HDMI connector

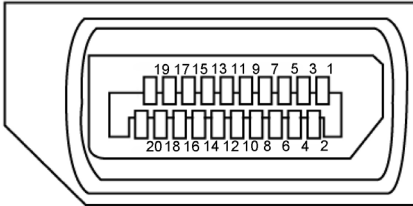


Pin number	19-pin side of the connected signal cable
1	TMDS DATA 2+
2	TMDS DATA 2 SHIELD
3	TMDS DATA 2-
4	TMDS DATA 1+
5	TMDS DATA 1 SHIELD
6	TMDS DATA 1-
7	TMDS DATA 0+
8	TMDS DATA 0 SHIELD
9	TMDS DATA 0-
10	TMDS CLOCK+
11	TMDS CLOCK SHIELD
12	TMDS CLOCK-
13	CEC
14	Reserved (N.C. on device)
15	DDC CLOCK (SCL)



16	DDC DATA (SDA)
17	DDC/CEC Ground
18	+5 V POWER
19	HOT PLUG DETECT

DP connector (in)

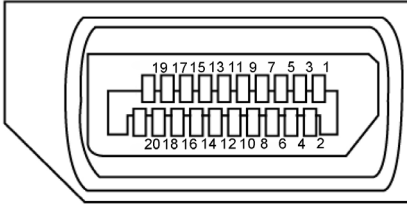


Pin number	20-pin side of the connected signal cable
1	ML3 (n)
2	GND
3	ML3 (p)
4	ML2 (n)
5	GND
6	ML2 (p)
7	ML1 (n)
8	GND
9	ML1 (p)
10	ML0 (n)
11	GND
12	ML0 (p)
13	GND
14	GND
15	AUX (p)
16	GND
17	AUX (n)



18	Hot Plug Detect
19	Re-PWR
20	+3.3 V DP_PWR

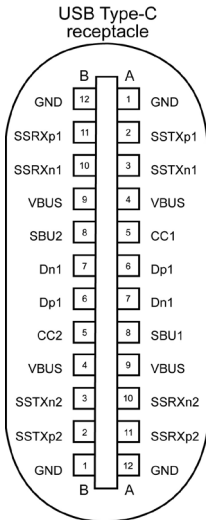
DP connector (out)



Pin number	20-pin side of the connected signal cable
1	ML0(p)
2	GND
3	ML0(n)
4	ML1(p)
5	GND
6	ML1(n)
7	ML2(p)
8	GND
9	ML2(n)
10	ML3(p)
11	GND
12	ML3(n)
13	CONFIG1
14	CONFIG2
15	AUX CH(p)
16	GND
17	AUX CH(n)
18	Hot Plug Detect
19	Return



USB Type-C connector



typically connected to a charger through a Type-C cable


Pin	Signal	Pin	Signal
A1	GND	B12	GND
A2	SSTXp1	B11	SSRXp1
A3	SSTXn1	B10	SSRXn1
A4	VBUS	B9	VBUS
A5	CC1	B8	SBU2
A6	Dp1	B7	Dn1
A7	Dn1	B6	Dp1
A8	SBU1	B5	CC2
A9	VBUS	B4	VBUS
A10	SSRXn2	B3	SSTXn2
A11	SSRXp2	B2	SSTXp2
A12	GND	B1	GND



Universal Serial Bus (USB)

This section gives you information about the USB ports that are available on the monitor. Your computer has the following USB ports:

- 2 downstream - left side USB 3.0
- 2 downstream - bottom side USB 2.0

 **NOTE:** The monitor's USB ports work only when the monitor is on or in standby mode. If you turn off the monitor and then turn it on, the attached peripherals may take a few seconds to resume normal functionality.

 **NOTE:** This monitor is Super-Speed USB 3.0 and High-Speed USB 2.0 compatible.

USB 3.0

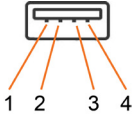
Transfer speed	Data rate	Power consumption
SuperSpeed	5 Gbps	4.5 W (Max., each port)
Hi-Speed	480 Mbps	4.5 W (Max., each port)
Full speed	12 Mbps	4.5 W (Max., each port)

USB 2.0

Transfer speed	Data rate	Power consumption
Hi-Speed	480 Mbps	2.5 W (Max., each port)
Full speed	12 Mbps	2.5 W (Max., each port)
Low speed	1.5 Mbps	2.5 W (Max., each port)

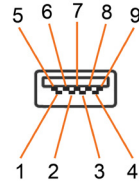


USB 2.0 port



Pin number	Signal name
1	VCC
2	DMD
3	DPD
4	GND

USB 3.0 port



Pin number	Signal name
1	VBUS
2	D-
3	D+
4	GND
5	StdA_SSRX-
6	StdA_SSRX+
7	GND_DRAIN
8	StdA_SSTX-
9	StdA_SSTX+
Shell	Shield



Plug-and-Play

You can install the monitor in any Plug-and-Play-compatible system. The monitor automatically provides the computer system with its extended display identification data (EDID) using display data channel (DDC) protocols so the computer can configure itself and optimize the monitor settings. Most monitor installations are automatic; you can select different settings if desired. For more information about changing the monitor settings, see [Operating the Monitor](#).

LCD Monitor Quality and Pixel Policy

During the LCD monitor manufacturing process, it is not uncommon for one or more pixels to become fixed in an unchanging state which are hard to see and do not affect the display quality or usability. For more information on LCD Monitor Pixel Policy, see Dell support site at: <http://www.dell.com/support/monitors>.



Setting Up the Monitor

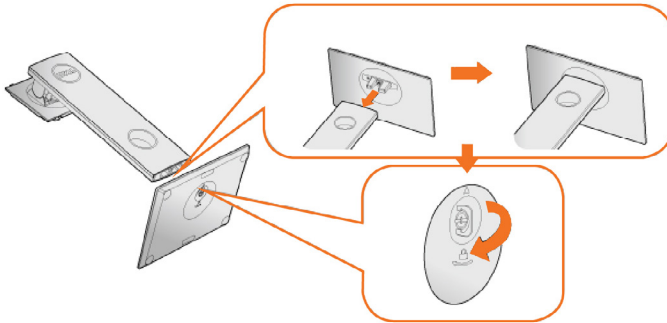
Attaching the stand

NOTE: The stand is not installed at the factory when shipped.

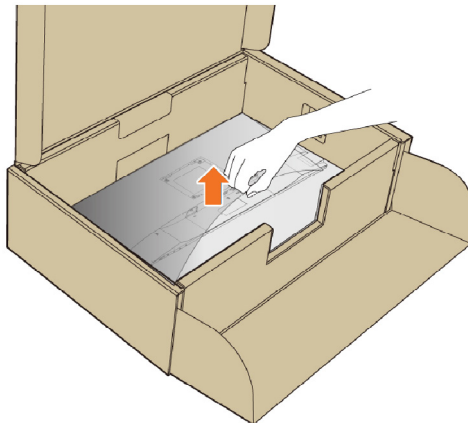
NOTE: The following instructions are applicable only for attaching the stand that was shipped with your monitor. If you are attaching a stand that you purchased from any other source, follow the set up instructions that were included with the stand.

To attach the monitor stand:

- 1 Follow the instructions on the flaps of the carton to remove the stand from the top cushion that secures it.
- 2 Insert the stand base blocks fully into the stand slot.
- 3 Lift the screw handle and turn the screw clockwise.
- 4 After fully tightening the screw, fold the screw handle flat within the recess.

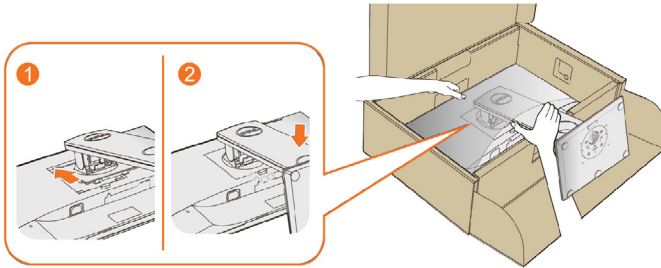


- 5 Lift the cover, as shown, to expose the VESA area for stand assembly.



6 Attach the stand assembly to the monitor.

- a. Fit the two tabs on the upper part of the stand to the groove on the back of the monitor.
- b. Press the stand down till it snaps into place.



7 Place the monitor upright.

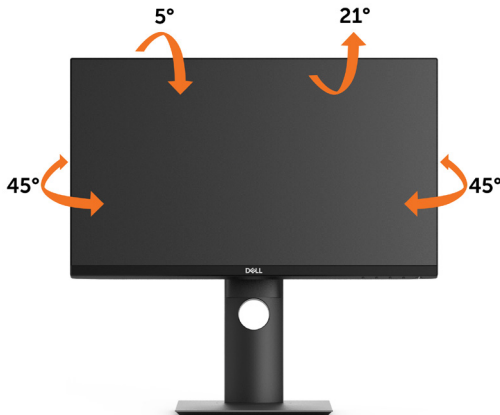
NOTE: Lift the monitor carefully to prevent it from slipping or falling.

Using the Tilt, Swivel, and Vertical Extension

NOTE: This is applicable for a monitor with a stand. If you purchased any other stand, refer to the respective stand setup guide for set up instructions.

Tilt, Swivel


With the built-in pedestal, you can tilt the monitor for the most comfortable viewing angle.



NOTE: The stand is detached when the monitor is shipped from the factory.



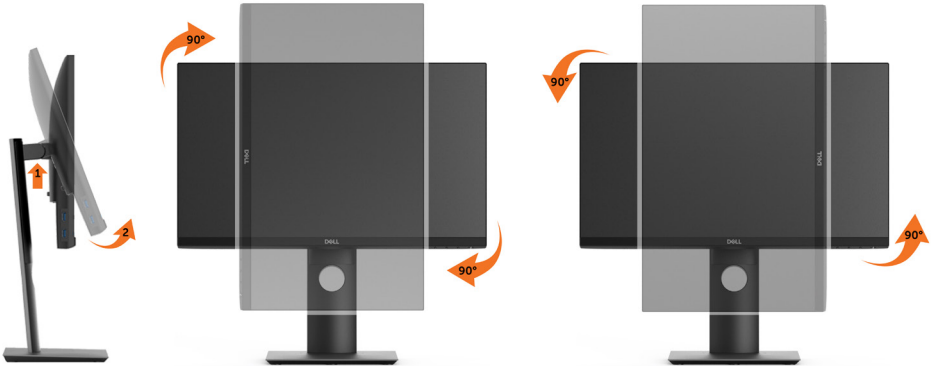
Vertical Extension


 **NOTE:** The stand extends vertically up to 130 mm. The figure below illustrates how to extend the stand vertically.




Rotating the Monitor

Before you rotate the monitor, your monitor should be fully vertically extended ([Vertical Extension](#)) and fully tilted ([Tilt](#)) up to avoid hitting the bottom edge of the monitor.




 **NOTE:** To use the Display Rotation function (Landscape versus Portrait view) with your Dell computer, you require an updated graphics driver that is not included with this monitor. To download the graphics driver, go to www.dell.com/support and see the download section for Video Drivers for latest driver updates.

 **NOTE:** When in the Portrait View Mode, you may experience performance degradation in graphic-intensive applications (3D Gaming and etc.).



Adjusting the Rotation Display Settings of Your System

After you have rotated your monitor, you need to complete the procedure below to adjust the Rotation Display Settings of your System.


 **NOTE:** If you are using the monitor with a non-Dell computer, you need to go the graphics driver website or your computer manufacturer website for information on rotating the 'contents' on your display.

To adjust the Rotation Display Settings:


- 1 Right-click on the desktop and click **Properties**.
- 2 Select the **Settings** tab and click **Advanced**.
- 3 If you have an ATI graphics card, select the **Rotation** tab and set the preferred rotation.

If you have an nVidia graphics card, click the **nVidia** tab, in the left-hand column select **NVRotate**, and then select the preferred rotation.

If you have an Intel® graphics card, select the **Intel** graphics tab, click **Graphic Properties**, select the **Rotation** tab, and then set the preferred rotation.

 **NOTE:** If you do not see the rotation option or it is not working correctly, go to www.dell.com/support and download the latest driver for your graphics card.

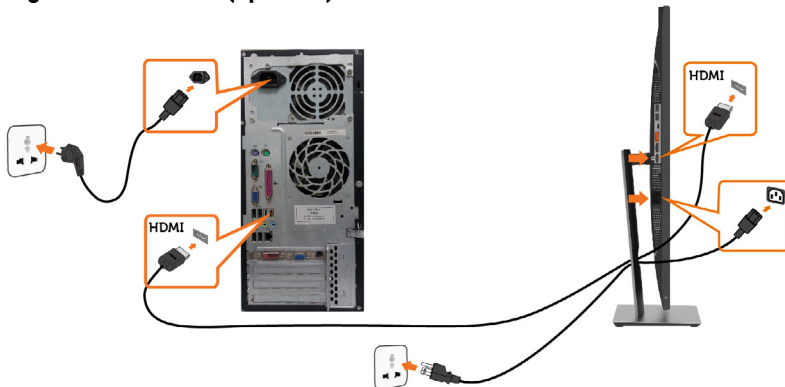
Connecting Your Monitor

 **WARNING:** Before you begin any of the procedures in this section, follow the [Safety Instructions](#).

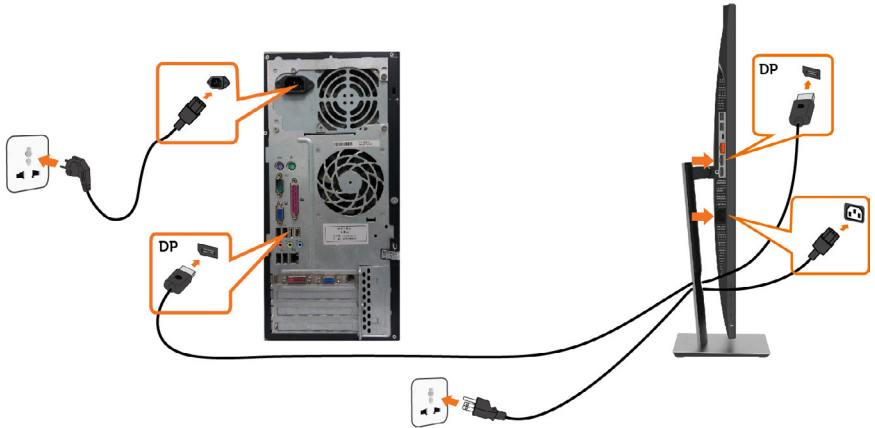
To connect your monitor to the computer:

- 1 Turn off your computer.
- 2 Connect the HDMI, DP or USB Type-C cable from your monitor to the computer.
- 3 Switch on your monitor.
- 4 Select the correct input source at Monitor OSD Menu and turn on your computer.

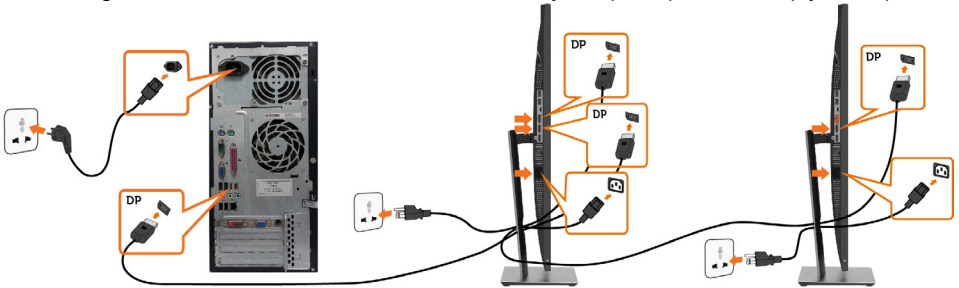
Connecting the HDMI cable (optional)






Connecting the DisplayPort cable

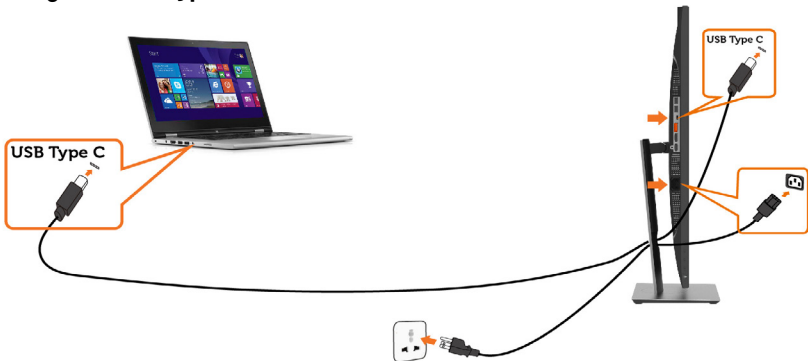


Connecting the monitor for DP Multi-Stream Transport (MST) function (optional)



-  **NOTE:** Supports the DP MST feature. To make use of this feature, your PC Graphics Card must be certified to DP1.2 with MST option.
-  **NOTE:** Remove the rubber plug when using the DP out connector.
-  **NOTE:** When DP in and DP out is connected to a PC and second monitor respectively for the first time, MST will be automatically enabled.

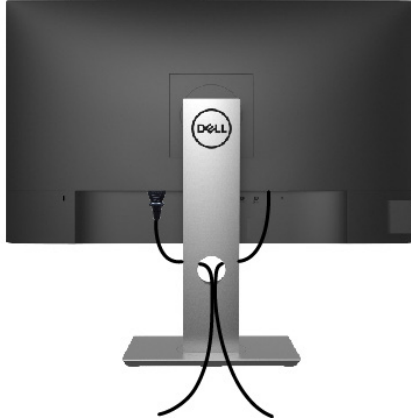
Connecting the USB Type-C cable



 **NOTE:**

- 1 USB Type-C Alternate mode with DP 1.2, DP 1.1 is not supported.
- 2 Supports USB PD (Power Delivery) profiles up to 65W(20V/3.25A).
- 3 If your computer requires >65W(20V/3.25A) to operate and the battery is drained, it may not power up or charge with P2219HC/P2419HC/P2719HC USB Type-C PD.

Organizing Your Cables



After attaching all necessary cables to your monitor and computer, (see [Connecting Your Monitor](#) for cable attachment) organize all cables as shown above.



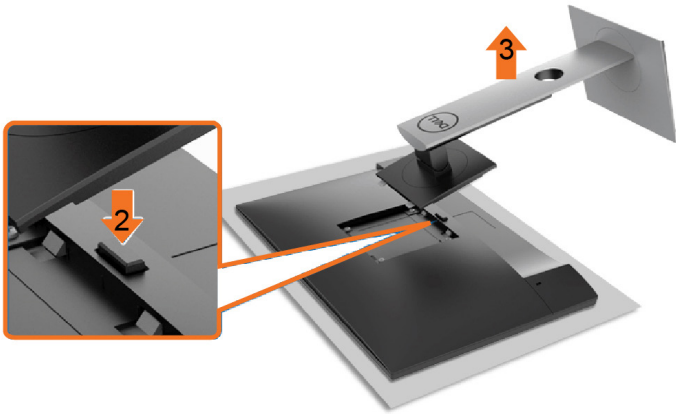
Removing the Monitor Stand

⚠ CAUTION: To prevent scratches on the LCD screen while removing the stand, make sure that the monitor is placed on a soft, clean surface.

📌 NOTE: The procedure below is applicable for the default stand. If you purchased any other stand, see the documentation shipped with the stand to set it up.

To remove the stand:

- 1 Place the monitor on a soft cloth or cushion.
- 2 Press and hold the stand-release button.
- 3 Lift the stand up and away from the monitor.



Wall Mounting (Optional)



NOTE: Use M4 x 10 mm screws to connect the monitor to the wall-mounting kit.

Refer to the instructions that come with the VESA-compatible wall mounting kit.


- 1 Place the monitor on a soft cloth or cushion on a stable, flat table.
- 2 Remove the stand.
- 3 Use a Phillips crosshead screwdriver to remove the four screws securing the plastic cover.
- 4 Attach the mounting bracket from the wall mounting kit to the monitor.
- 5 Mount the monitor on the wall by following the instructions that comes with the wall mounting kit.

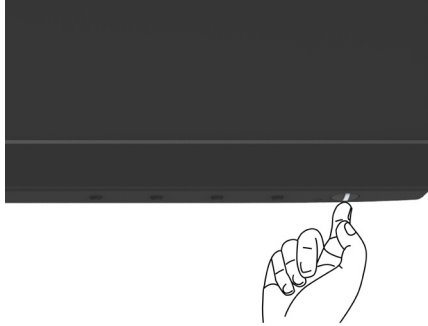
NOTE: For use only with UL or CSA or GS-listed wall mount bracket with minimum weight/load bearing capacity of 3.05 kg (P2219HC)/3.52 kg (P2419HC)/4.67 kg (P2719HC).



Operating the Monitor

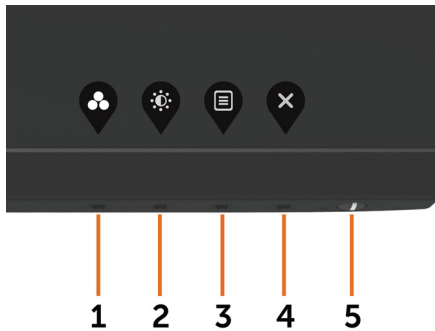
Turning on the Monitor

Press the  button to turn on the monitor.








Using the Front Panel Controls

Use the control buttons on the front of the monitor to adjust the characteristics of the image being displayed. As you use these buttons to adjust the controls, an OSD shows the numeric values of the characteristics as they change.



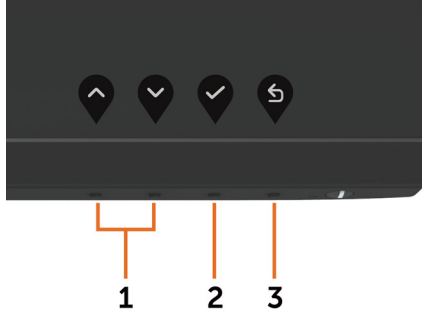
The following table describes the front panel buttons:

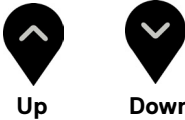


Front-Panel Button	Description
1  Shortcut key: Preset Modes	Use this button to choose from a list of preset color modes.
2  Shortcut key: Brightness/Contrast	Use this button to directly access the “Brightness/Contrast” bar.
3  Menu	Use this menu button to launch the on-screen display (OSD) and select the OSD menu. See Accessing the Menu System .
4  Exit	Use this button to go back to the main menu or exit the OSD main menu.
5  Power Button (with power-status light)	To turn the monitor on or off. Solid white light indicates the monitor is turned on and functioning normally. Blinking white light indicates the monitor is in Standby Mode.



Front-Panel Button

Use the buttons on the front of the monitor to adjust the image settings.





Front Panel Button	Description
1  Up Down	Use the Up (increase) and Down (decrease) keys to adjust items in the OSD menu.
2  OK	Use the OK button to confirm your selection.
3  Back	Use the Back button to go back to the previous menu.

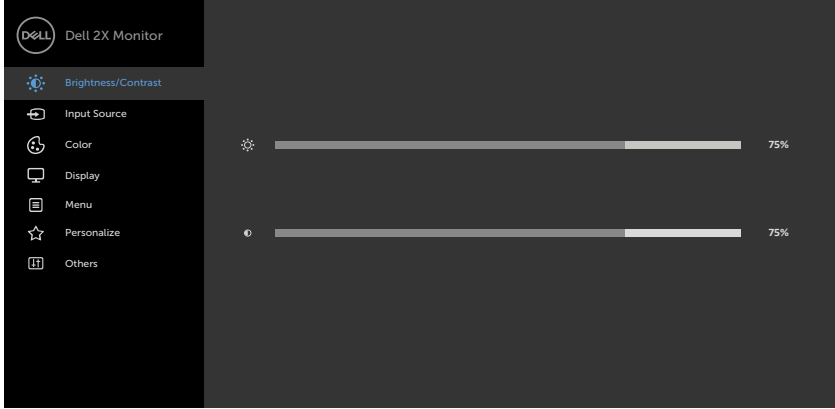







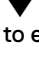
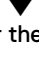





Using the On-Screen Display (OSD) Menu

Accessing the Menu System


 **NOTE:** Any changes you make using the OSD menu are automatically saved if you move to another OSD menu, exit the OSD menu, or wait for the OSD menu to disappear.

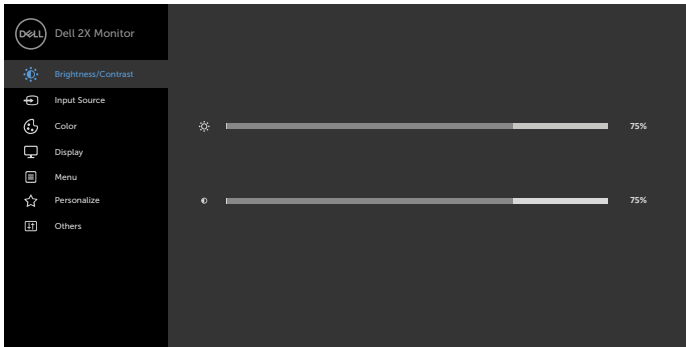
- 1 Press the  button to launch the OSD menu and display the main menu.







- 2 Press the  and  buttons to move between options. As you move from one icon to another, the option name is highlighted.
- 3 Press the , , or  button once to activate the highlighted option.
- 4 Press the  and  buttons to select the desired parameter.
- 5 Press  to enter the slide bar and then use the  or  button, according to the indicators on the menu, to make your changes.
- 6 Select the  to return to previous menu or  to accept and return to previous menu.




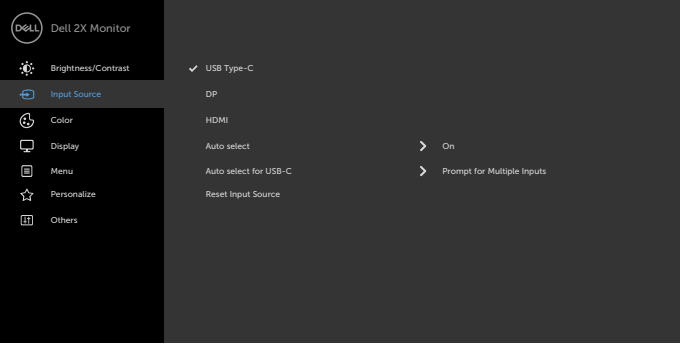








Icon	Menu and Submenus	Description
	Brightness/Contrast	Use this menu to activate Brightness/Contrast adjustment.




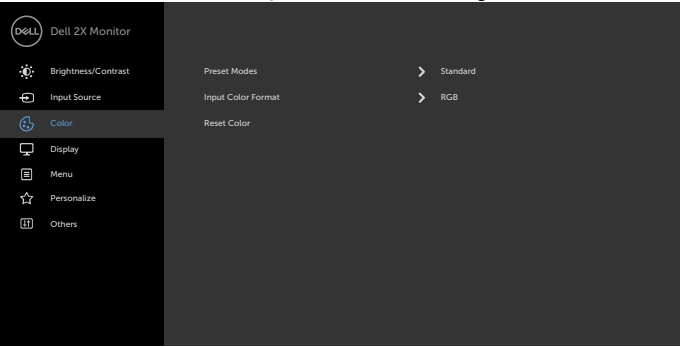

Brightness **Brightness** adjusts the luminance of the backlight (minimum 0; maximum 100).
 Press the  button to increase brightness.
 Press the  button to decrease brightness.
NOTE: Manual adjustment of **Brightness** is disabled when **Dynamic Contrast** is switched on.

Contrast Adjust the **Brightness** first, and then adjust **Contrast** only if further adjustment is necessary.
 Press the  button to increase contrast and press the  button to decrease contrast (between 0 and 100).
 Contrast adjusts the difference between darkness and lightness on the monitor.



Icon	Menu and Submenus	Description
	Input Source	Use the Input Source menu to select between different video inputs that are connected to your monitor. 
		   
	USB Type-C	Select the USB Type-C input when you are using the USB Type-C connector. Use  to select the USB Type-C input source.
	DP	Select the DP input when you are using the DP connector. Use  to select the DP input source.
	HDMI	Select the HDMI input when you are using the HDMI connector. Use  to select the HDMI input source.
	Auto Select	Use  to select Auto Select . the monitor scans for available input sources.
	Auto Select for USB-C	Allows you to set Auto Select for USB Type-C to: <ul style="list-style-type: none"> • Prompt for Multiple Inputs : Always show Switch to USB Type-C Video Input message for user to choose whether to switch or not. • Yes: The monitor always switches to USB Type-C video without asking while USB Type-C is connected. • No: The monitor will NOT auto switch to USB Type-C video from another available input.
	Reset Input Source	Resets your monitor's Input Source settings to the factory defaults.

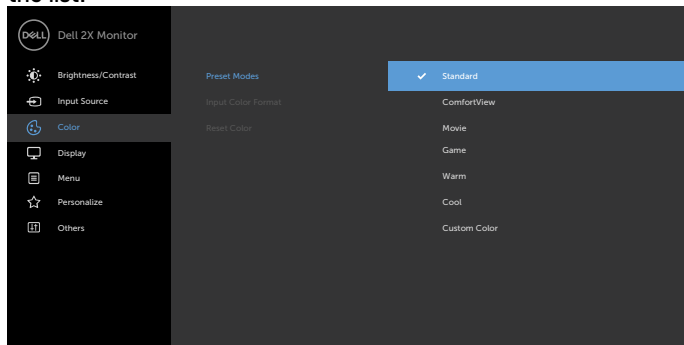




Icon	Menu and Submenus	Description
	Color	Use the Color menu to adjust the color setting mode.
		
		



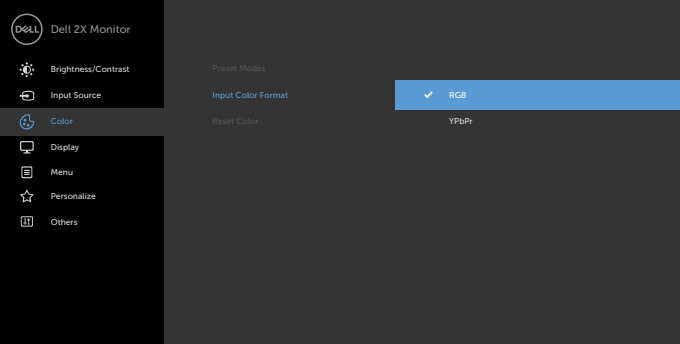




Icon	Menu and Submenus	Description
------	-------------------	-------------

Preset Modes When you select **Preset Modes**, you can choose **Standard**, **ComfortView**, **Movie**, **Game**, **Warm**, **Cool** or **Custom Color** from the list.


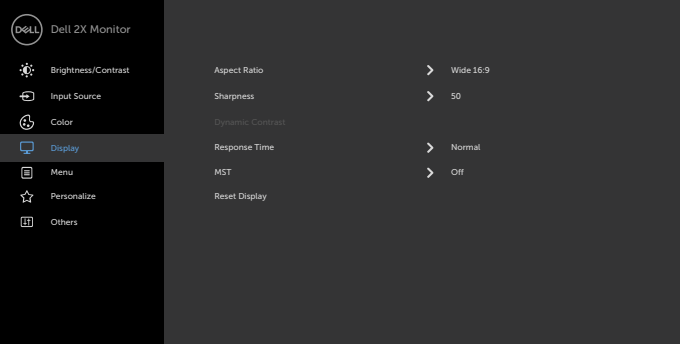






- **Standard:** Default color settings. This is the default preset mode.
- **ComfortView:** Decreases the level of blue light emitted from the screen to make viewing more comfortable for your eyes.
NOTE: To reduce the risk of eye strain and neck/arm/back/shoulders pain from using the monitor for long periods of time, we suggest you to :
 - Set the screen about 20 to 28 inches (50-70 cm) from your eyes.
 - Blink frequently to moisten or rewet your eyes when working with the monitor.
 - Take regular and frequent breaks for 20 minutes every two hours.
 - Look away from your monitor and gaze at a distant object at 20 feet away for at least 20 seconds during the breaks.
 - Perform stretches to relieve tension in the neck/arm/back/shoulders during the breaks.
- **Movie:** Loads color settings ideal for movies.
- **Game:** Loads color settings ideal for most gaming applications.
- **Warm:** Increases the color temperature. The screen appears warmer with a red/yellow tint.
- **Cool:** Decreases the color temperature. The screen appears cooler with a blue tint.
- **Custom Color:** Allows you to manually adjust the color settings. Press the  and  buttons to adjust the Red, Green, and Blue values and create your own preset color mode.




Icon	Menu and Submenus	Description
	Input Color Format	<p>Allows you to set the video input mode to:</p> <ul style="list-style-type: none"> • RGB: Select this option if your monitor is connected to a computer (or DVD player) using the HDMI cable. • YPbPr: Select this option if your DVD player supports only YPbPr output.
		 <p>The screenshot shows the Dell 2X Monitor OSD menu. On the left is a navigation menu with options: Dell 2X Monitor, Brightness/Contrast, Input Source, Color, Display, Menu, Personalize, and Others. The 'Color' option is selected. The main display area shows 'Preset Modes' with 'Input Color Format' set to 'RGB' (indicated by a checkmark and a blue highlight). Below it, 'Reset Color' is set to 'YPbPr'.</p>
	Hue	<p>Use  or  to adjust the hue from 0 to 100. NOTE: Hue adjustment is available only for Movie and Game mode.</p>
	Saturation	<p>Use  or  to adjust the saturation from 0 to 100. NOTE: Saturation adjustment is available only for Movie and Game modes.</p>
	Reset Color	<p>Resets your monitor's color settings to the factory defaults.</p>


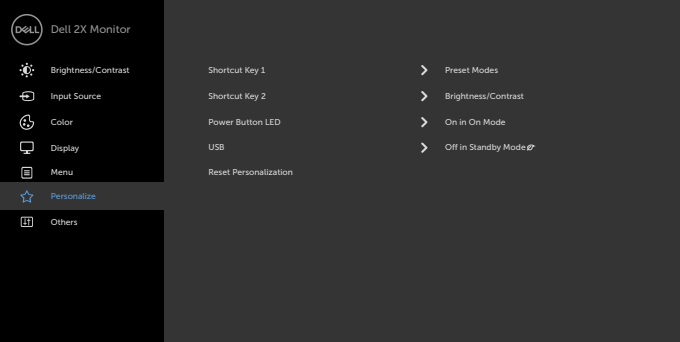


Icon	Menu and Submenus	Description
	Display	Use the Display menu to adjust image.
		
		
Aspect Ratio	Adjust the image ratio to Wide 16:9 , 4:3 or 5:4 .	
Sharpness	Makes the image look sharper or softer. Use  or  to adjust the sharpness from '0' to '100'.	
Dynamic Contrast	Allows you to increase the level of contrast to provide sharper and more detailed image quality. Push the  button to select the Dynamic Contrast "On" or "Off". NOTE: For Game and Movie preset mode only. NOTE: Dynamic Contrast provides higher contrast if you select Game or Movie preset mode.	
Response Time	Allows you to set the Response Time to Normal or Fast .	
MST	DP Multi Stream Transport, Set to ON enables MST(DP out), Set to OFF disables MST function. NOTE: When DP/USB Type-C upstream cable and DP downstream cable is connected, monitor will set MST = ON automatically, this action will only be done once after Factory Reset or Display Reset.	
Reset Display	Restores the display settings to factory defaults.	



Icon	Menu and Submenus	Description
	Menu	<p>Select this option to adjust the settings of the OSD, such as the languages of the OSD, the amount of time the menu remains on screen, and so on.</p> 
	Language	<p>Set the OSD display to one of eight languages. (English, Spanish, French, German, Brazilian Portuguese, Russian, Simplified Chinese, or Japanese).</p>
	Rotation	<p>Rotates the OSD by 0/90/270 degrees. You can adjust the menu according to your display rotation.</p>
	Transparency	<p>Select this option to change the menu transparency by using  and  (min. 0% / max. 100%).</p>
	Timer	<p>OSD Hold Time: Sets the length of time the OSD remains active after you press a button. Use the  and  buttons to adjust the slider in 1-second increments, from 5 to 60 seconds.</p>
	Reset Menu	<p>Restore the menu settings to factory defaults.</p>



Icon	Menu and Submenus	Description
	Personalize	
Shortcut key 1	Select from Preset Modes, Brightness/Contrast, Input Source, Aspect Ratio, Rotation set as shortcut key 1.	
Shortcut key 2	Select from Preset Modes, Brightness/Contrast, Input Source, Aspect Ratio, Rotation set as shortcut key 2.	
Power Button LED	Allows you to set the state of the power light to save energy.	
USB-A Charging	Allows you to enable or disable USB Type-A (Downstream Ports) charging function during monitor standby mode. NOTE: This option is only available when the USB Type-C (Upstream Port) cable is unplugged. If the USB Type-C cable is connected, USB-A Charging follows the USB host power status and the option is not accessible. NOTE: This option was previously called “USB” in older monitor firmware revisions.	
USB-C Charging	Allows you to enable or disable Always On USB Type-C Charging function during monitor Power Off mode. NOTE: This option is only available in newer monitor firmware revisions. See Always On USB Type-C Charging for troubleshooting.	
Reset Personalization	Restores Shortcut Keys and Power Button LED to factory defaults.	

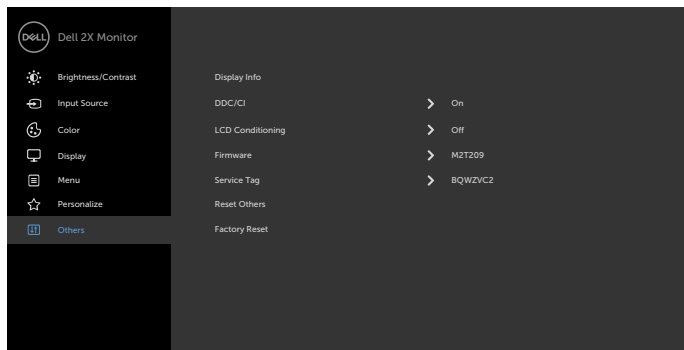


Icon	Menu and Submenus	Description
------	-------------------	-------------

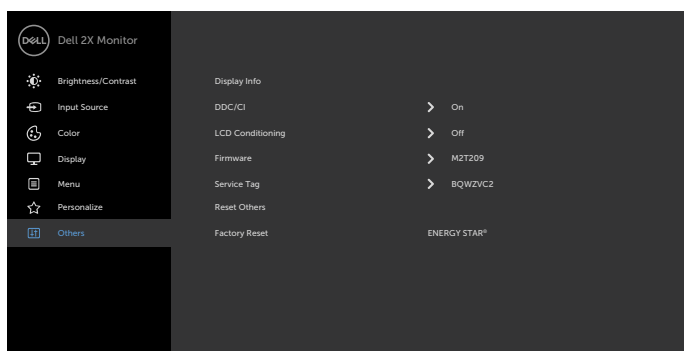


Other

P2219HC



P2419HC/P2719HC

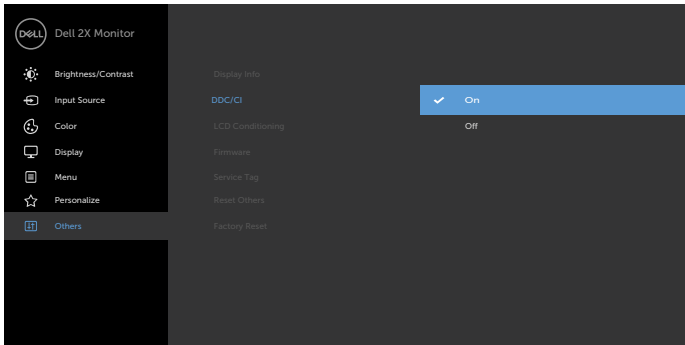


Select this option to adjust the OSD settings such as the **DDC/CI, LCD conditioning, and so on.**

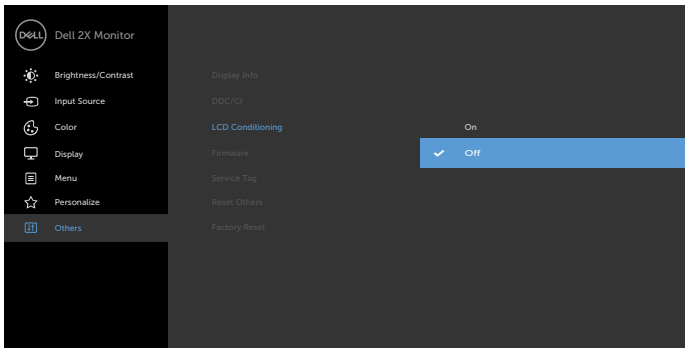
Display info	Displays the monitor's current settings.
---------------------	--



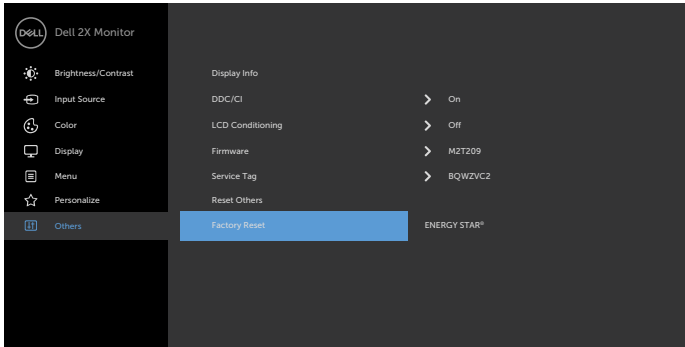
Icon	Menu and Submenus	Description
DDC/CI		<p>DDC/CI (Display Data Channel/Command Interface) allows you to adjust the monitor settings using software on your computer. Select Off to turn off this feature.</p> <p>Enable this feature for best user experience and optimum performance of your monitor.</p>



LCD Conditioning	<p>Helps reduce minor cases of image retention. Depending on the degree of image retention, the program may take some time to run. Select On to start the process.</p>
------------------	---

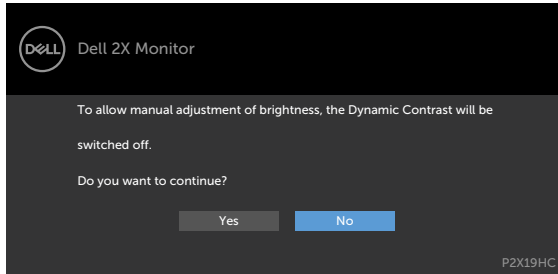


Icon	Menu and Submenus	Description
	Firmware	Firmware version.
	Service Tag	Displays the Service Tag. The Service Tag is a unique alphanumeric identifier that allows Dell to identify the product specifications and access warranty information. NOTE: The Service Tag is also printed on a label located at the back of the cover.
	Reset Others	Restores other settings, such as DDC/CI , to factory defaults.
	Factory Reset	P2219HC Restores all OSD settings to the factory defaults. P2419HC/P2719HC Restores all preset values to the factory default settings. These are also the settings for ENERGY STAR® tests.

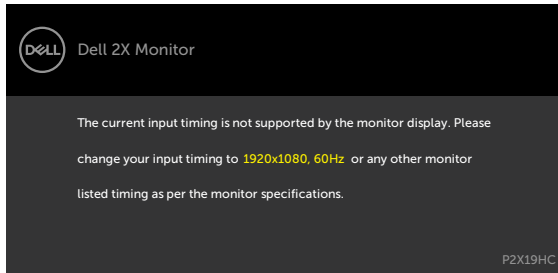


OSD Warning Messages

When the **Dynamic Contrast** feature is enabled (in these preset modes: **Game** or **Movie**), manual brightness adjustment is disabled.

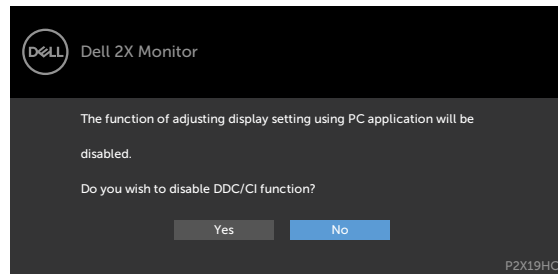


When the monitor does not support a particular resolution mode, you can see the following message:

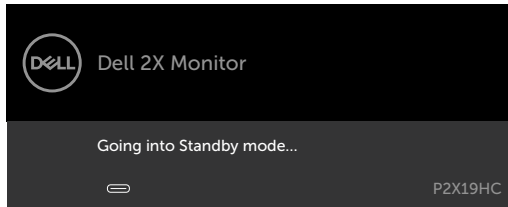


This means that the monitor cannot synchronize with the signal that it is receiving from the computer. See [Monitor Specifications](#) for the Horizontal and Vertical frequency ranges addressable by this monitor. Recommended mode is 1920 x 1080.

You can see the following message before the DDC/CI function is disabled:

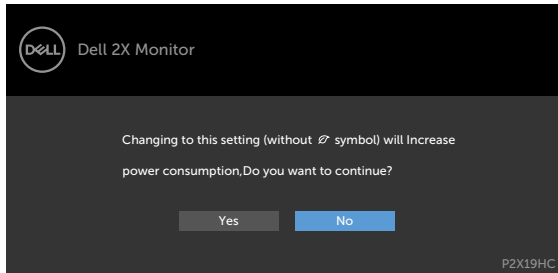


When the monitor enters the **Standby** mode, the following message will appear:

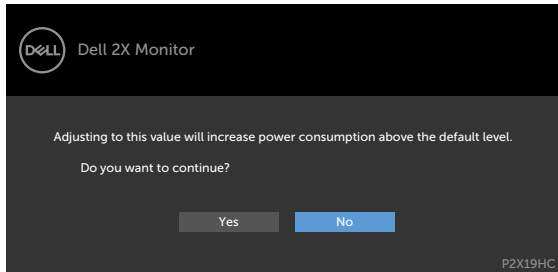


Activate the computer and wake up the monitor to gain access to the **OSD**.

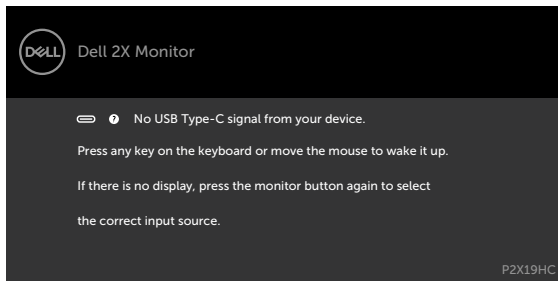
Select OSD items of **On in Standby Mode** in Personalize feature, the following message will appear:



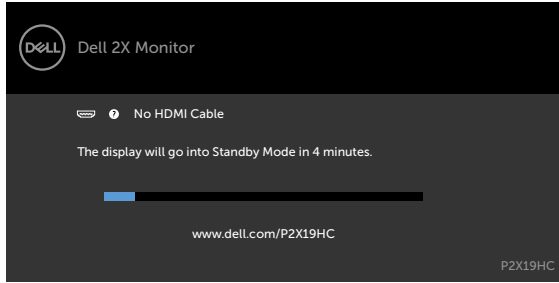
If adjust the Brightness level above the default level over 75%, the following message will appear:



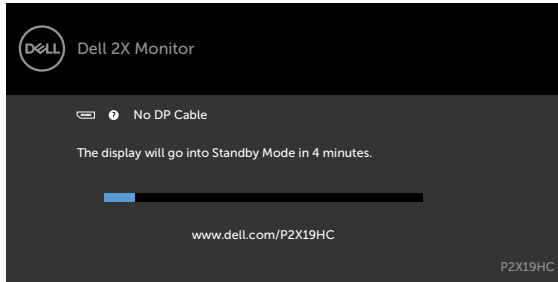
If you press any button other than the power button, the following messages will appear depending on the selected input:



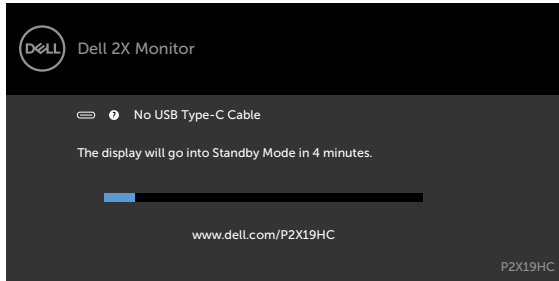
If either HDMI, DP, USB Type-C input is selected and the corresponding cable is not connected, a floating dialog box as shown below appears.



or

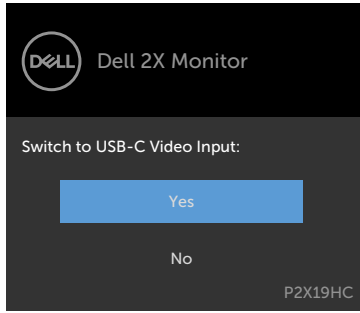


or

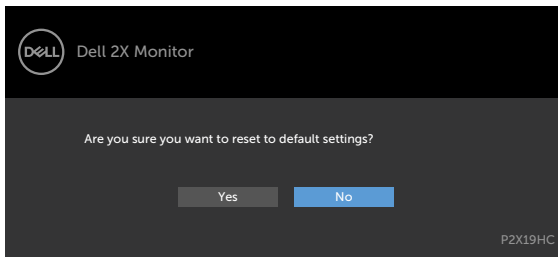


When the monitor is currently displaying video from DP/HDMI and the user connects a USB Type-C cable to a notebook/phone that supports DP Alternate mode, if **Auto Select for USB-C** is selected to Prompt for Multiple Inputs, the following message will appear:



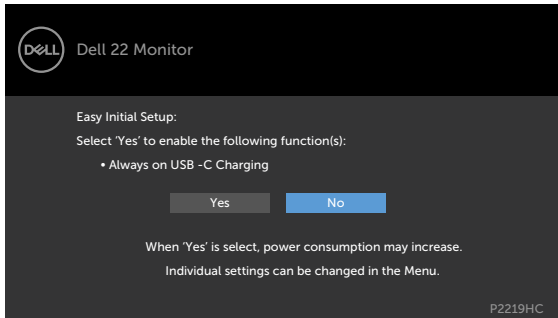


When you select OSD items of Factory Reset in Other feature, the following message will appear:

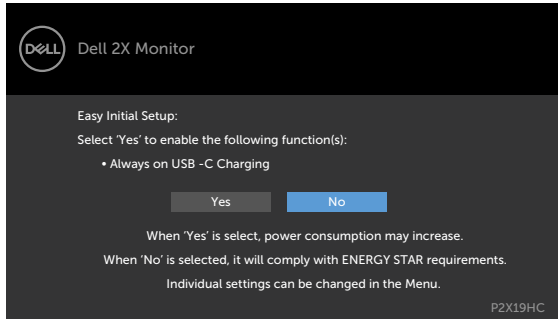


When you select 'Yes' to reset to default settings, the following message will appear:

P2219HC



P2419HC/P2719HC



See [Troubleshooting](#) for more information.



Troubleshooting

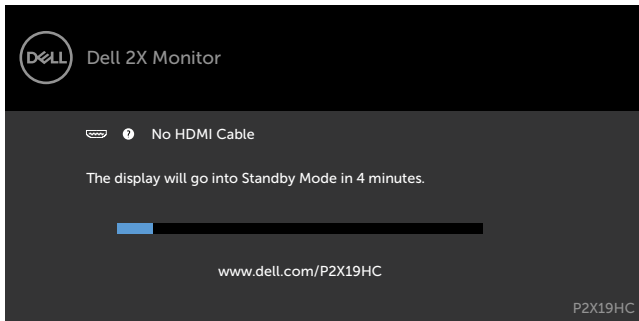
⚠ WARNING: Before you begin any of the procedures in this section, follow the [Safety Instructions](#).

Self-Test

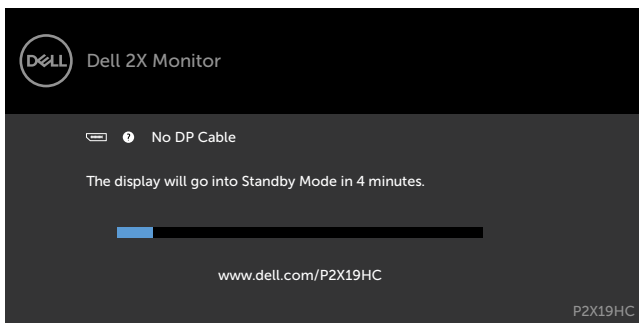
Your monitor provides a self-test feature that allows you to check whether your monitor is functioning properly. If your monitor and computer are properly connected but the monitor screen remains dark, run the monitor self-test by performing the following steps:

- 1 Turn off both your computer and the monitor.
- 2 Unplug the video cable from the back of the computer. To ensure proper Self-Test operation, remove all digital and the analog cables from the back of computer.
- 3 Turn on the monitor.

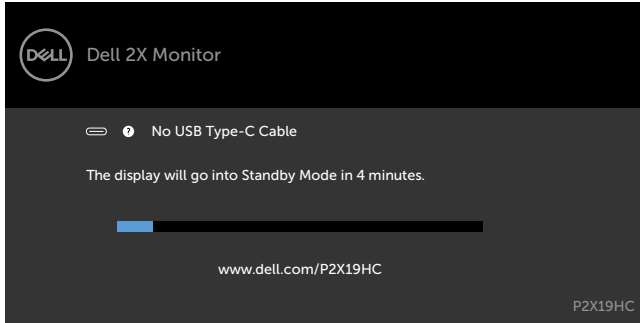
The floating dialog box should appear on-screen (against a black background), if the monitor cannot sense a video signal and is working correctly. While in self-test mode, the power LED remains white. Also, depending upon the selected input, one of the dialogs shown below will continuously scroll through the screen.



or



or




- 4 This box also appears during normal system operation if the video cable becomes disconnected or damaged.
- 5 Turn off your monitor and reconnect the video cable; then turn on both your computer and the monitor.

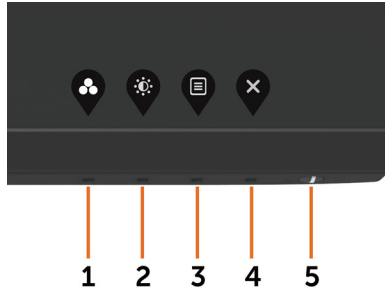
If your monitor screen remains blank after you use the previous procedure, check your video controller and computer, because your monitor is functioning properly.



Built-in Diagnostics

Your monitor has a built-in diagnostic tool that helps you determine if the screen abnormality you are experiencing is an inherent problem with your monitor, or with your computer and video card.

 **NOTE:** You can run the built-in diagnostics only when the video cable is unplugged and the monitor is in self-test mode.



To run the built-in diagnostics:

- 1 Make sure that the screen is clean (no dust particles on the surface of the screen).
- 2 Unplug the video cable(s) from the back of the computer or monitor. The monitor then goes into the self-test mode.
- 3 Press and hold **Button 1** for 5 seconds. A gray screen appears.
- 4 Carefully inspect the screen for abnormalities.
- 5 Press **Button 1** on the front panel again. The color of the screen changes to red.
- 6 Inspect the display for any abnormalities.
- 7 Repeat steps 5 and 6 to inspect the display in green, blue, black, white, and text screens.

The test is complete when the text screen appears. To exit, press **Button 1** again. If you do not detect any screen abnormalities upon using the built-in diagnostic tool, the monitor is functioning properly. Check the video card and computer.



Always On USB Type-C Charging

You can charge your notebook or mobile devices through the USB Type-C cable even when the monitor is powered off. This option, called 'USB-C Charging' is located in the **Personalize** section of the OSD. This feature is only available in the following monitor firmware revisions:

- P2219HC: M2B106 or later
- P2419HC: M3B106 or later
- P2719HC: M2T106 or later

You may verify your monitor's firmware revision from **Firmware**. If this feature is not available in your product, please follow these steps to update the monitor to the latest firmware:

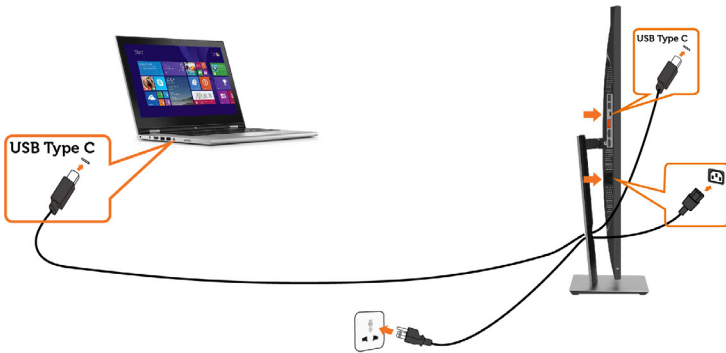
1 Download the latest application installer (**Monitor Firmware Update Utility.exe**) from Drivers & Downloads section of the Dell Monitor support site:

P2219HC: www.dell.com/P2219HC

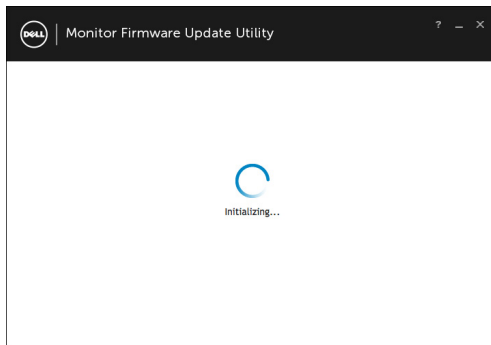
P2419HC: www.dell.com/P2419HC

P2719HC: www.dell.com/P2719HC

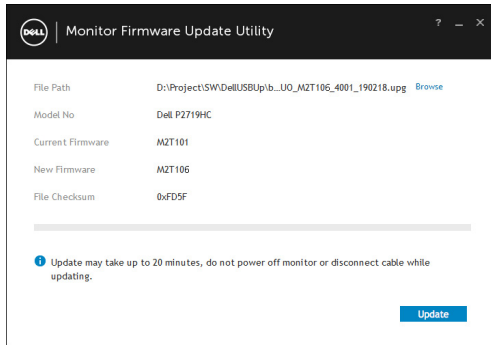
2 Connect the USB Type-C cable to the Monitor and PC.



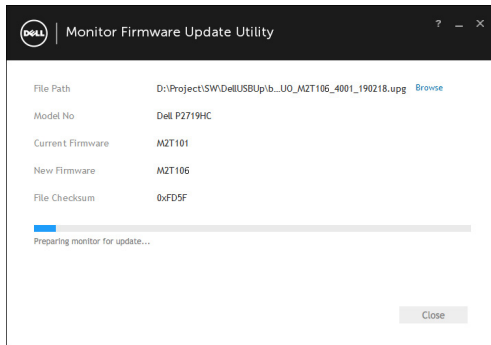
3 Run the **Monitor Firmware Update Utility.exe** to install the program.



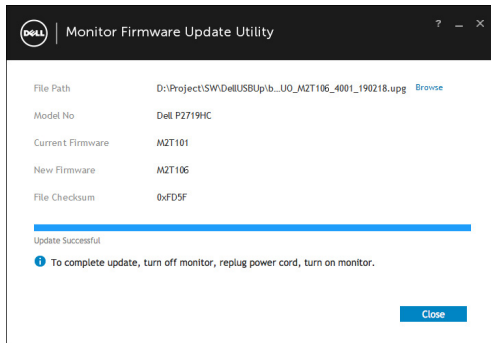
4 Check current firmware revision: click **Update to update the firmware.**



5 Wait for the firmware to be updated.



6 Click **Close once the firmware is updated.**



Common Problems

The following table contains general information about common monitor problems you might encounter and the possible solutions:

Common Symptoms	What You Experience	Possible Solutions
No Video/Power LED off	No picture	<ul style="list-style-type: none">• Ensure that the video cable connecting the monitor and the computer is properly connected and secure.• Verify that the power outlet is functioning properly using any other electrical equipment.• Ensure that the power button is depressed fully.• Ensure that the correct input source is selected in the Input Source menu.
No Video/Power LED on	No picture or no brightness	<ul style="list-style-type: none">• Increase brightness and contrast controls via OSD.• Perform monitor self-test feature check.• Check for bent or broken pins in the video cable connector.• Run the built-in diagnostics.• Ensure that the correct input source is selected in the Input Source menu.
Missing Pixels	LCD screen has spots	<ul style="list-style-type: none">• Cycle power on-off.• Pixel that is permanently off is a natural defect that can occur in LCD technology.• For more information on Dell Monitor Quality and Pixel Policy, see Dell Support site at: http://www.dell.com/support/monitors.
Stuck-on Pixels	LCD screen has bright spots	<ul style="list-style-type: none">• Cycle power On-Off.• Pixel that is permanently off is a natural defect that can occur in LCD technology.• For more information on Dell Monitor Quality and PixelPolicy, see Dell Support site at: http://www.dell.com/support/monitors.
Brightness Problems	Picture too dim or too bright	<ul style="list-style-type: none">• Reset the monitor to factory settings.• Adjust brightness and contrast controls via OSD.
Safety Related Issues	Visible signs of smoke or sparks	<ul style="list-style-type: none">• Do not perform any troubleshooting steps.• Contact Dell immediately.
Intermittent Problems	Monitor malfunctions on & off	<ul style="list-style-type: none">• Ensure that the video cable connecting the monitor to the computer is connected properly and is secure.• Reset the monitor to factory settings.• Perform monitor self-test feature check to determine if the intermittent problem occurs in self-test mode.



Common Symptoms	What You Experience	Possible Solutions
Missing Color	Picture missing color	<ul style="list-style-type: none"> • Perform monitor self-test. • Ensure that the video cable connecting the monitor to the computer is connected properly and is secure. • Check for bent or broken pins in the video cable connector.
Wrong Color	Picture color not good	<ul style="list-style-type: none"> • Change the settings of the Preset Modes in the Color menu OSD depending on the application. • Adjust R/G/B value under Custom Color in Color menu OSD. • Change the Input Color Format to PC RGB or YPbPr in the Color menu OSD. • Run the built-in diagnostics.
Image retention from a static image left on the monitor for a long period of time	Faint shadow from the static image displayed appears on the screen	<ul style="list-style-type: none"> • Set the screen to turn off after a few minutes of screen idle time. These can be adjusted in Windows Power Options or Mac Energy Saver setting. • Alternatively, use a dynamically changing screensaver.



Product Specific Problems

Specific Symptoms	What You Experience	Possible Solutions
Screen image is too small	Image is centered on screen, but does not fill entire viewing area	<ul style="list-style-type: none"> • Check the Aspect Ratio setting in the Display menu OSD. • Reset the monitor to factory settings.
Cannot adjust the monitor with the buttons on the front panel	OSD does not appear on the screen	<ul style="list-style-type: none"> • Turn off the monitor, unplug the monitor power cable, plug it back, and then turn on the monitor.
No Input Signal when user controls are pressed	No picture, the LED light is white	<ul style="list-style-type: none"> • Check the signal source. Ensure the computer is not in the power saving mode by moving the mouse or pressing any key on the keyboard. • Check whether the signal cable is plugged in properly. Re-plug the signal cable if necessary. • Reset the computer or video player.
The picture does not fill the entire screen	The picture cannot fill the height or width of the screen	<ul style="list-style-type: none"> • Due to different video formats (aspect ratio) of DVDs, the monitor may display in full screen. • Run the built-in diagnostics.
No image when using USB Type-C connection to PC or Notebook.	Black screen	<ul style="list-style-type: none"> • Verify if the PC or Notebook USB Type-C interface can support Alternate Mode DP1.2. • USB Type-C interface of PC or Notebook cannot support Alternate Mode DP1.2.
No charging when using USB Type-C connection to the PC or Notebook	No charging	<ul style="list-style-type: none"> • Verify if the Notebook requires a >65W power adaptor. • If the Notebook requires a >65W power adaptor, it may not charge with the USB Type-C connection.



Universal Serial Bus (USB) Specific Problems

Specific Symptoms	What You Experience	Possible Solutions
USB interface is not working	USB peripherals are not working	<ul style="list-style-type: none">• Check that your monitor is turned ON.• Reconnect the upstream cable to your computer.• Reconnect the USB peripherals (downstream connector).• Switch off and then turn on the monitor again.• Reboot the computer.• Some USB devices like external portable HDD require higher electric current; connect the device directly to the computer system.
SupreSpeed USB 3.0 interface is slow	SuperSpeed USB 3.0 peripherals working slowly or not working at all	<ul style="list-style-type: none">• Check that your computer is USB 3.0-capable.• Some computers have USB 3.0, USB 2.0, and USB 1.1 ports. Ensure that the correct USB port is used.• Reconnect the upstream cable to your computer.• Reconnect the USB peripherals (downstream connector).• Reboot the computer.
Wireless USB peripherals stop working when a USB 3.0 device is plugged in	Wireless USB peripherals responding slowly or only working as the distance between itself and its receiver decreases	<ul style="list-style-type: none">• Increase the distance between the USB 3.0 peripherals and the wireless USB receiver.• Position your wireless USB receiver as close as possible to the wireless USB peripherals.• Use a USB-extender cable to position the wireless USB receiver as far away as possible from the USB 3.0 port.



Appendix

Safety Instructions

For displays with glossy bezels the user should consider the placement of the display as the bezel may cause disturbing reflections from surrounding light and bright surfaces.

 **WARNING: Use of controls, adjustments, or procedures other than those specified in this documentation may result in exposure to shock, electrical hazards, and/or mechanical hazards.**


For information on safety instructions, see the Safety, Environmental, and Regulatory Information (SERI).

FCC Notices (U.S. only) and Other Regulatory Information

For FCC notices and other regulatory information, see the regulatory compliance website located at www.dell.com/regulatory_compliance.

Contacting Dell

For customers in the United States, call 800-WWW-DELL (800-999-3355).

 **NOTE:** If you do not have an active Internet connection, you can find contact information on your purchase invoice, packing slip, bill, or Dell product catalog.

Dell provides several online and telephone-based support and service options. Availability varies by country and product, and some services may not be available in your area.

To get online Monitor support content:

See www.dell.com/support/monitors.

To contact Dell for sales, technical support, or customer service issues:

- 1 Go to www.dell.com/support.
- 2 Verify your country or region in the Choose A Country/Region drop-down menu at the top-left corner of the page.
- 3 Click **Contact Us** next to the country dropdown.
- 4 Select the appropriate service or support link based on your need.
- 5 Choose the method of contacting Dell that is convenient for you.

EU product database for energy label and product information sheet

P2419HC: <https://eprel.ec.europa.eu/qr/344278>

P2419HC WOST: <https://eprel.ec.europa.eu/qr/345709>



Setting Up Your Monitor

Setting Display Resolution to 1920 x 1080

For best performance, set the display resolution to 1920 x 1080 pixels by performing the following steps:

In Windows Vista, Windows 7, Windows 8 or Windows 8.1:

- 1 For Windows 8 or Windows 8.1 only, select the Desktop tile to switch to classic desktop.
- 2 Right-click on the desktop and click **Screen Resolution**.
- 3 Click the Dropdown list of the Screen Resolution and select 1920 x 1080.
- 4 Click **OK**.


In Windows 10:

- 1 Right-click on the desktop and click **Display Settings**.
- 2 Click **Advanced display settings**.
- 3 Click the dropdown list of **Resolution** and select 1920 x 1080.
- 4 Click **Apply**.

If you do not see the recommended resolution as an option, you may need to update your graphics driver. Please choose the scenario below that best describes the computer system you are using, and follow the given steps.

Dell computer

- 1 Go to www.dell.com/support, enter your service tag, and download the latest driver for your graphics card.
- 2 After installing the drivers for your graphics adapter, attempt to set the resolution to 1920 x 1080 again.

 **NOTE:** If you are unable to set the resolution to 1920 x 1080, please contact Dell to inquire about a graphics adapter that supports these resolutions.




Non-Dell computer

In Windows Vista, Windows 7, Windows 8 or Windows 8.1:

- 1 For Windows 8 or Windows 8.1 only, select the Desktop tile to switch to classic desktop.
- 2 Right-click on the desktop and click Personalization.
- 3 Click Change Display Settings.
- 4 Click Advanced Settings.
- 5 Identify your graphics controller supplier from the description at the top of the window (e.g. NVIDIA, AMD, Intel etc.).
- 6 Refer to the graphic card provider website for updated driver (for example, <http://www.AMD.com> or <http://www.NVIDIA.com>).
- 7 After installing the drivers for your graphics adapter, attempt to set the resolution to 1920 x 1080 again.

In Windows 10:

- 1 Right-click on the desktop and click Display Settings.
- 2 Click Advanced display settings.
- 3 Click Display adapter properties.
- 4 Identify your graphics controller supplier from the description at the top of the window (e.g. NVIDIA, AMD, Intel etc.).
- 5 Refer to the graphic card provider website for updated driver (for example, <http://www.AMD.com> or <http://www.NVIDIA.com>).
- 6 After installing the drivers for your graphics adapter, attempt to set the resolution to 1920 x 1080 again.

 **NOTE:** If you are unable to set the recommended resolution, please contact the manufacturer of your computer or consider purchasing a graphics adapter that supports the video resolution.



Maintenance Guidelines

Cleaning Your Monitor



WARNING: Before cleaning the monitor, unplug the monitor power cable from the electrical outlet.



CAUTION: Read and follow the [Safety Instructions](#) before cleaning the monitor.

For best practices, follow these instructions in the list below while unpacking, cleaning, or handling your monitor:

- To clean your anti-static screen, lightly dampen a soft, clean cloth with water. If possible, use a special screen-cleaning tissue or solution suitable for the anti-static coating. Do not use benzene, thinner, ammonia, abrasive cleaners, or compressed air.
- Use a lightly-dampened, soft cloth to clean the monitor. Avoid using detergent of any kind as some detergents leave a milky film on the monitor.
- If you notice white powder when you unpack your monitor, wipe it off with a cloth.
- Handle your monitor with care as a darker-colored monitor may get scratched and show white scuff marks more than a lighter-colored monitor.
- To help maintain the best image quality on your monitor, use a dynamically changing screen saver and turn off your monitor when not in use.

