

1. Disassembly Procedures

S1 Turn off power

S2 Place monitor on U4919DW curve sponge jig. Disassemble VESA cover from Rear Cover

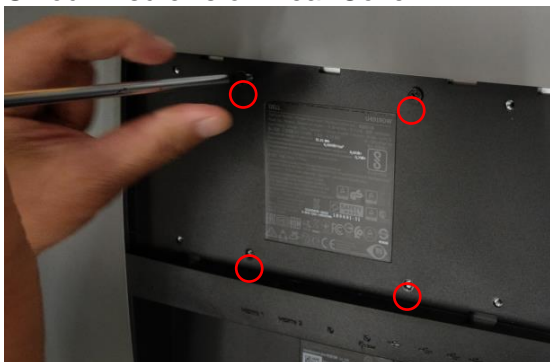


S3 Unlock 4 screws to disassemble stand



(Screw Torque: 11 ± 1 Kgf)

S4 Unlock 4 screws on Rear Cover

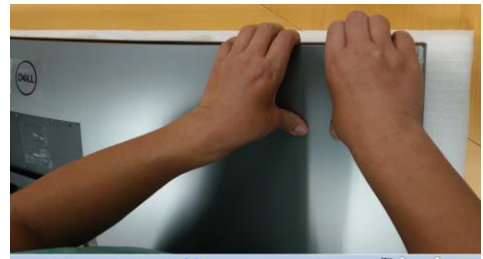


(Screw Torque: 11 ± 1 Kgf)

S5

Disassemble Rear Cover from Middle Frame

(Sequence: 2 corner of top side → the middle of top side → left & right sides → the 2 corner of bottom side → the middle of bottom side)

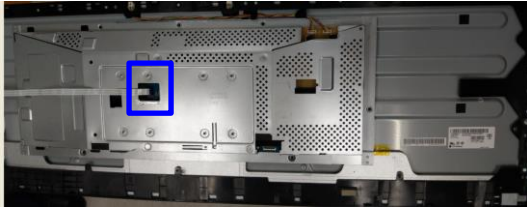


S6

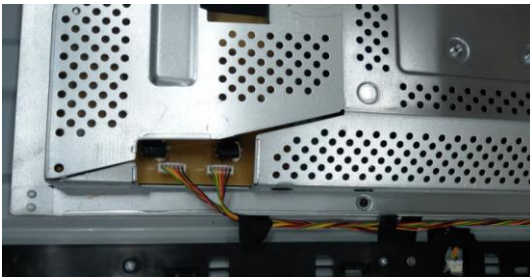
Remove USB SIDE BD FFC cable from I/F BD to take off Rear Cover



- S7** Tear off Al tape from Main Shielding (See blue mark). Pull out Control BD cable from I/F BD



- S8** Pull out lamp wire from PCBA

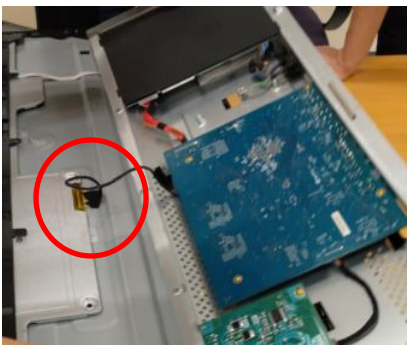


- S9** Unlock 7 screws on Main Shielding

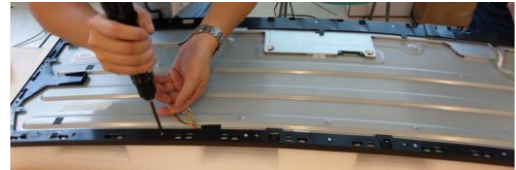


(Screw Torque: 4.5±0.5kgf)

- S10** Disassemble EDP cable from panel to take off Main Shielding



- S11** Unlock 15 screws on Middle Frame and 7 screws on the bottom of Middle Frame. Disassemble MF from Panel

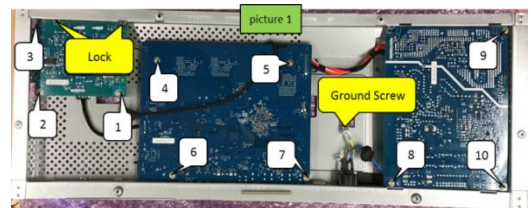


(Screw Torque: 4.5±0.5kgf)

- S12** Take off safety Mylar from Power BD

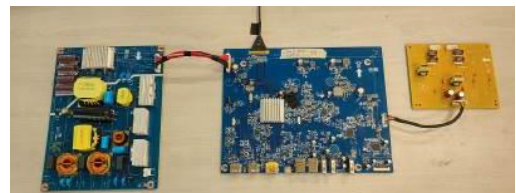


- S13** Unlock 10 PCBA screws & 1 ground screw

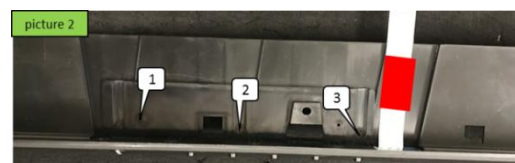


(Screw Torque: 8.5~9.5kgf)

- S14** Disassemble PCBA from Main Shielding and pull off all wires from PCBA



- S15** Unlock 3 screws to disassemble "BTN PWR ABS" from middle frame



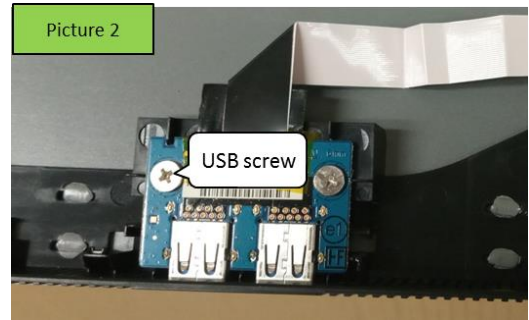
(Screw Torque: 0.95~1.05Kgf)

- S16** Take off Control BD cable and tear off “MYLAR CTRL-BD”
Unlock 4 screws to disassemble Control BD from “BTN PWR ABS”



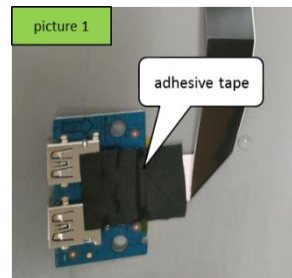
(Screw Torque: 0.95~1.05Kgf)

- S17** Unlock 2 USB screw and take off USB Side BD from Rear Cover

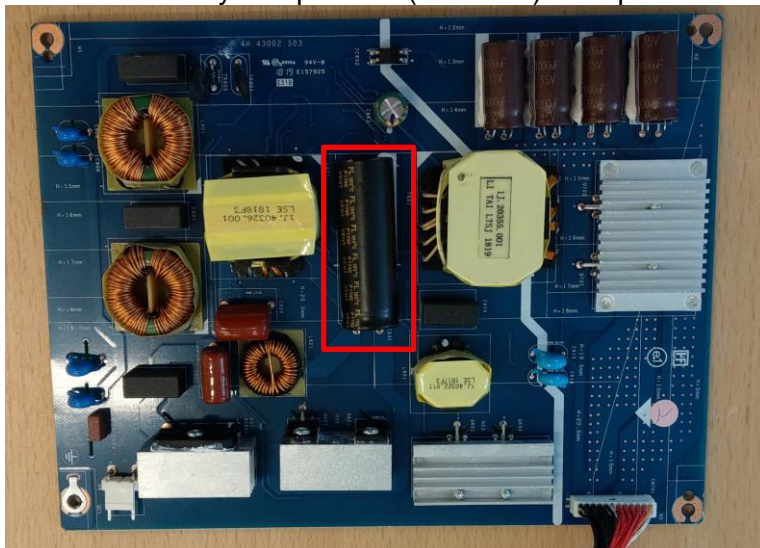


(Screw Torque: 4-5Kgf)

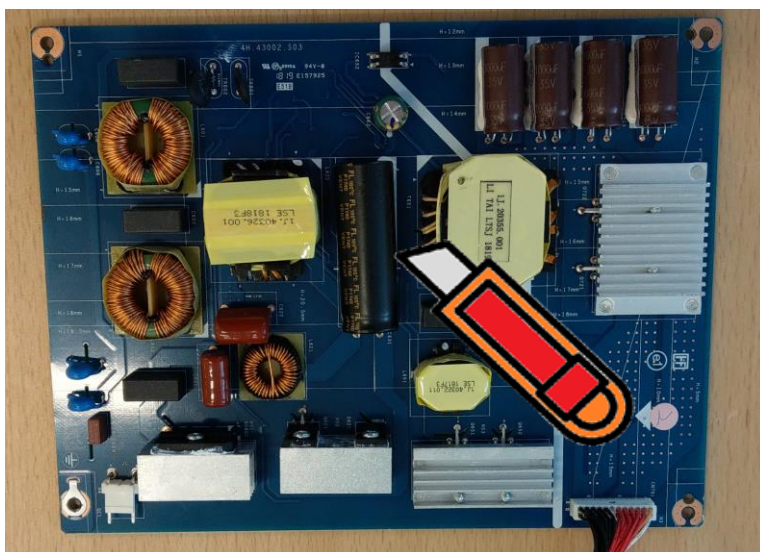
- S18** Tear off tape and disassemble USB cable and USB Side BD



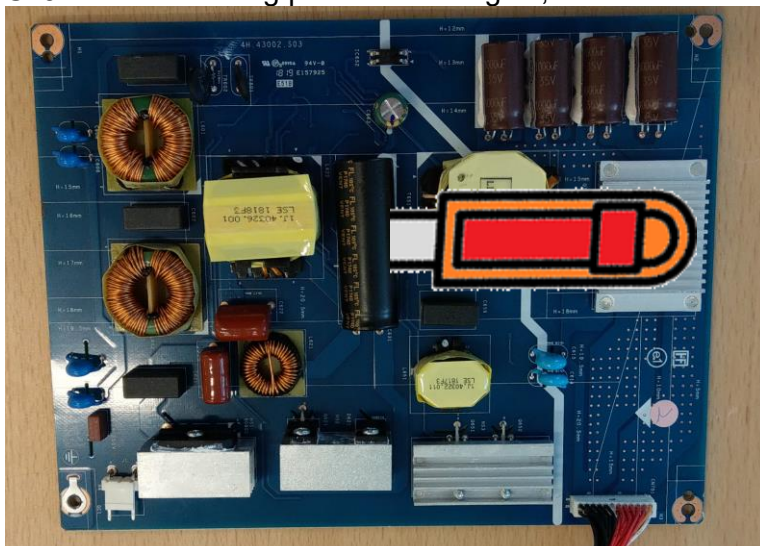
S19 Remove electrolyte capacitors (red mark) from printed circuit boards



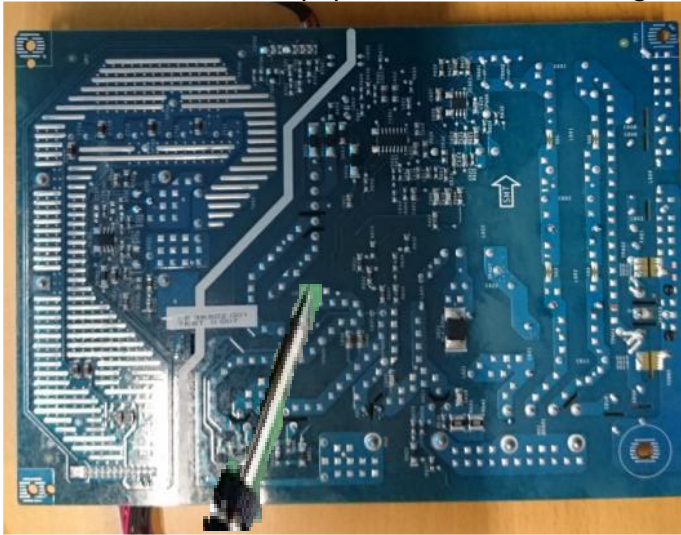
S19-1 Cut the glue between bulk cap. and PCB with a knife



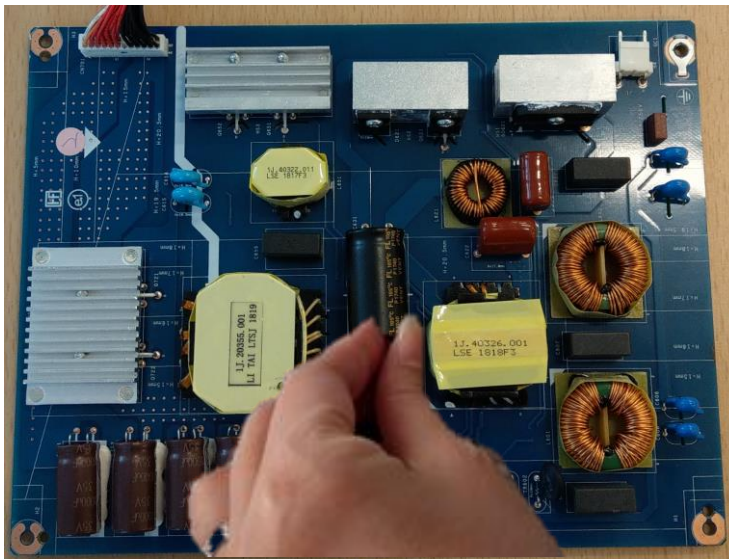
S19-2 Ensure cutting path within the glue, don't touch bulk cap. or PCB



S19-3 Take out bulk cap. pin solder with soldering iron and absorber



S19-4 Lift the bulk cap. up and away from the PCB



2. Product material information

The following substances, preparations, or components should be disposed of or recovered separately from other WEEE in compliance with Article 4 of EU Council Directive 75/442/EEC.

Capacitors / condensers (containing PCB/PCT)	No used
Mercury containing components	No used
Batteries	No used
Printed circuit boards (with a surface greater than 10 square cm)	Product has printed circuit boards (with a surface greater than 10 square cm)
Component contain toner, ink and liquids	No used
Plastic containing BFR	No used
Component and waste contain asbestos	No used
CRT	No used
Component contain CFC, HCFC, HFC and HC	No used
Gas discharge lamps	No used
LCD display > 100 cm ²	Product has an LCD greater than 100 cm ²
External electric cable	Product has external cables
Component contain refractory ceramic fibers	No used
Component contain radio-active substances	No used
Electrolyte capacitors (height > 25mm, diameter > 25mm)	Product has electrolyte capacitors (height >25mm, diameter > 25mm)

3. Tools Required

List the type and size of the tools that would typically can be used to disassemble the product to a point where components and materials requiring selective treatment can be removed.

Tool Description:

- Screwdriver
- Penknife
- Bar scraper