

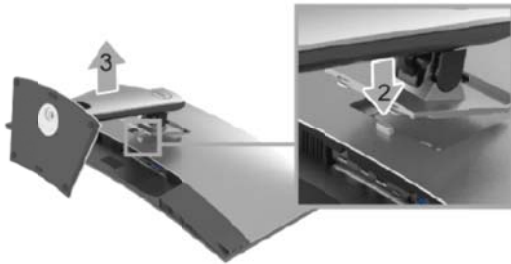
1. Disassembly Procedures

S1 Turn off power

S2 Place the monitor on U3818DW curve sponge jig

Press and hold the stand release button.

Lift the stand up and away from the monitor.

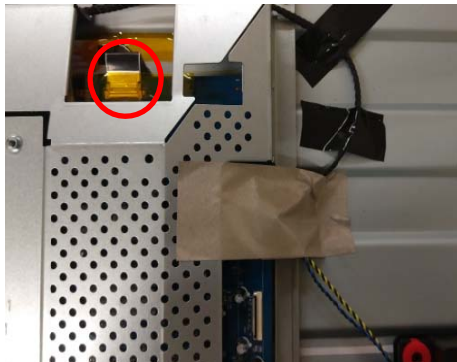


S3 Unlock 4 screws on RC to disassemble

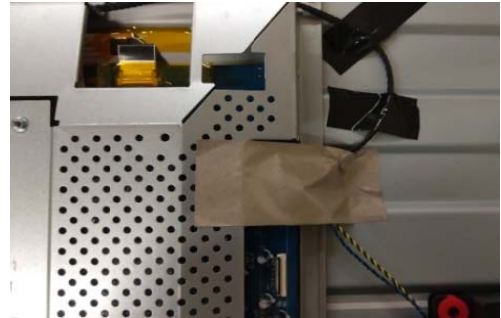


(Screw Torque: 11 ± 1 kgf)

S4 Remove USB FFC cable from IF BD



S5 Tear off conduct tape from SHD



S6 Disassemble conduct gasket of USB BD

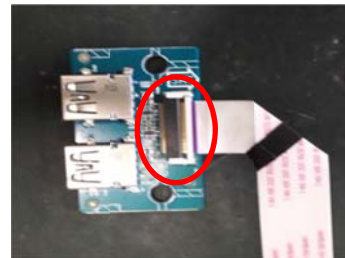
Unlock screws of fixed USB BD

Disassemble USB BD from RC



(Screw Torque: 7 ± 1 kgf)

S7 Disassemble USB FFC cable from USB BD



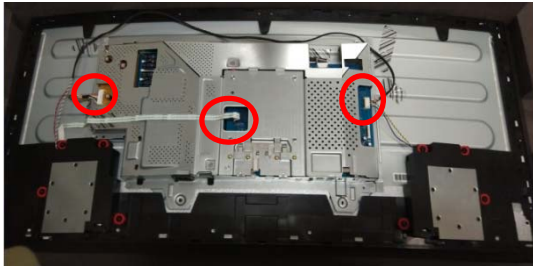
S8 Unlock screws of fixed speakers
Disassemble speakers



(Screw Torque: 5~6kgf)

S9 Disassemble control BD FFC cable and speaker wire from IF BD

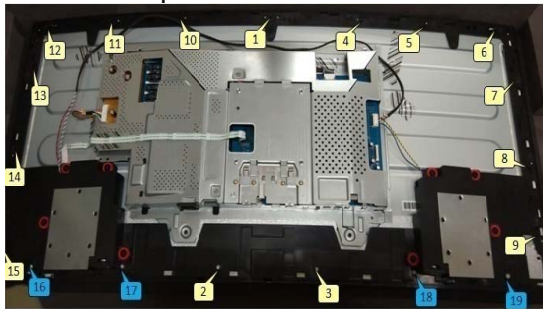
Disassemble lamp-wire from power BD



S10 Tear off amber tape from LVDS cable
Disassemble LVDS cable from IF BD



S11 Unlock screws to disassemble middle frame from panel



(Screw Torque: 4.0-4.5kgf)

S12 Unlock screws to disassemble control button from middle frame



(Screw Torque: 1.2-1.3kgf)

S13 Tear off Mylar from control BD

Unlock screws to disassemble control BD from control button

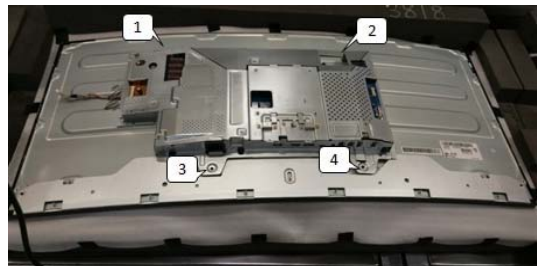


(Screw Torque: 0.9-0.95kgf)

S14 Disassemble control BD FFC cable from control BD

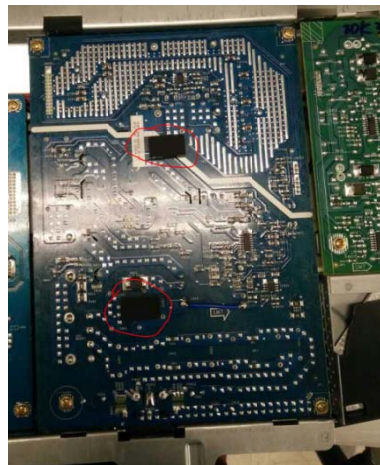


S15 Unlock screws to disassemble SHD
Take off Mylar from SHD



(Screw Torque: 4.5±0.5kgf)

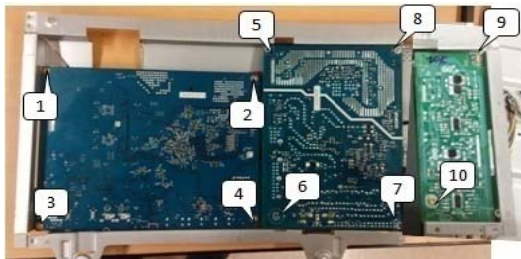
S16 Tear off rubber from power BD



- S17** Tear off tapes from lamp-wire
- Disassemble lamp-wire from panel
- Tear off amber tape from LVDS connector
- Disassemble LVDS cable from panel
- Disassemble LVDS cable from panel

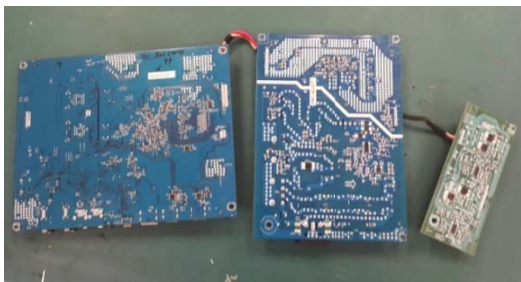


- S18** Unlock PCBA screws

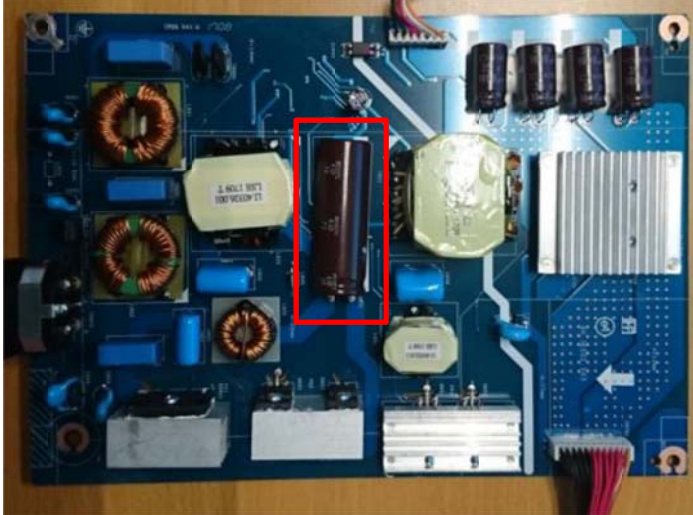


(Screw Torque: 8±1kgf)

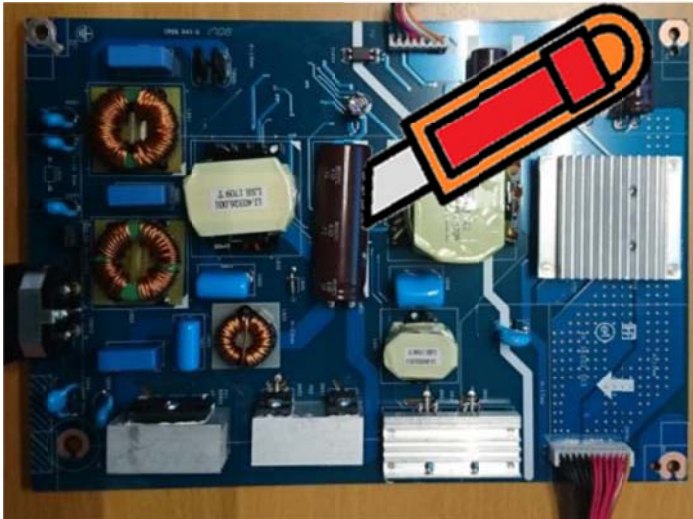
- S19** Disassemble LED Driver BD, IF BD and Power BD from SHD



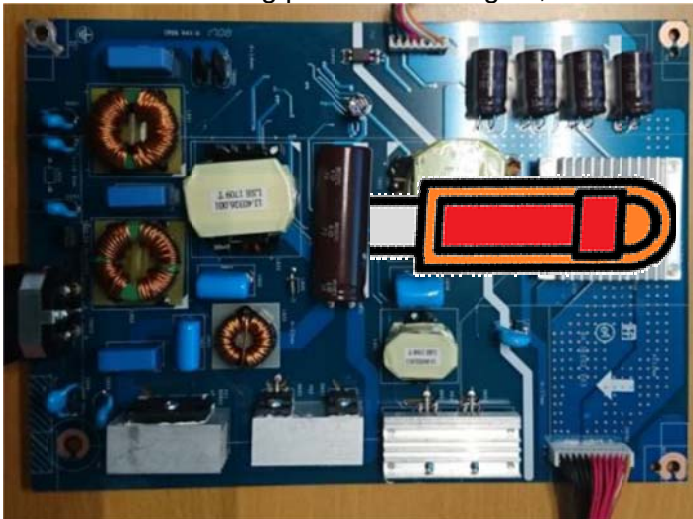
S20 Remove electrolyte capacitors (red mark) from printed circuit boards



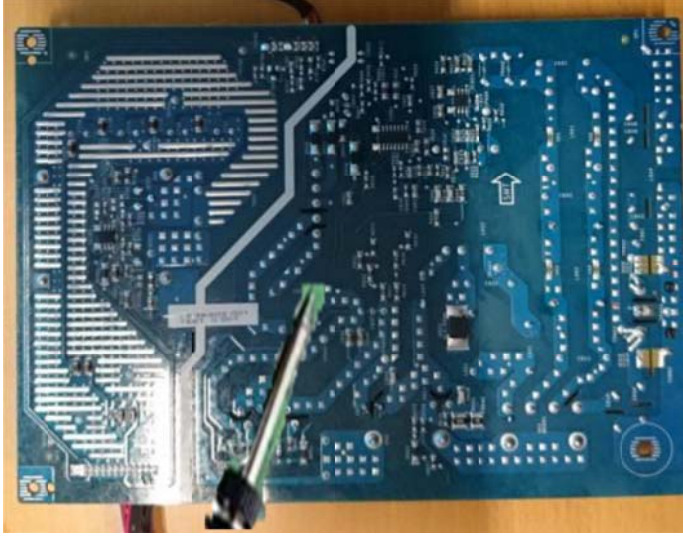
S20-1 Cut the glue between bulk cap. and PCB with a knife



S20-2 Ensure cutting path within the glue, don't touch bulk cap. or PCB



S20-3 Take out bulk cap. pin solder with soldering iron and absorber



S20-4 Lift the bulk cap. up and away from the PCB



2. Product material information

The following substances, preparations, or components should be disposed of or recovered separately from other WEEE in compliance with Article 4 of EU Council Directive 75/442/EEC.

Capacitors / condensers (containing PCB/PCT)	No used
Mercury containing components	No used
Batteries	No used
Printed circuit boards (with a surface greater than 10 square cm)	Product has printed circuit boards (with a surface greater than 10 square cm)
Component contain toner, ink and liquids	No used
Plastic containing BFR	No used
Component and waste contain asbestos	No used
CRT	No used
Component contain CFC, HCFC, HFC and HC	No used
Gas discharge lamps	No used
LCD display > 100 cm ²	Product has an LCD greater than 100 cm ²
External electric cable	Product has external cables
Component contain refractory ceramic fibers	No used
Component contain radio-active substances	No used
Electrolyte capacitors (height > 25mm, diameter > 25mm)	Product has electrolyte capacitors (height >25mm, diameter > 25mm)

3. Tools Required

List the type and size of the tools that would typically can be used to disassemble the product to a point where components and materials requiring selective treatment can be removed.

Tool Description:

- Screwdriver
- Penknife
- Bar scraper