

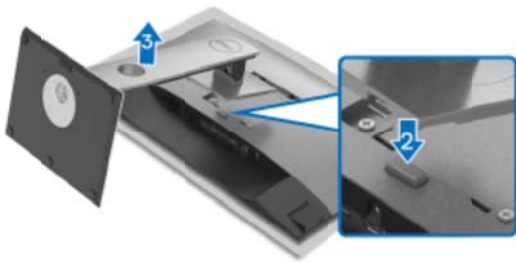
1. Disassembly Procedures

S1 Turn off the monitor.

S2 Place the monitor on a soft cloth along the desk.

1. Removing the monitor stand.

- 1). Place the monitor on a soft cloth or cushion.
- 2). Press and hold the stand release button.
- 3). Lift the stand up and away from the monitor.



S3 Unlock 4 screws on Rear Cover.



(Screw Torque: 11±1kgf)

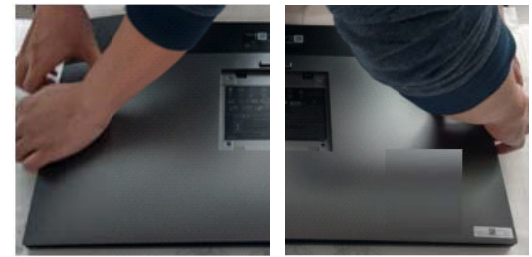
S4 Disassemble Rear Cover from middle frame.

Notice the disassembly order:

1).Disassemble the top side.



2).Disassemble the Left/Right side.



3).Disassemble the bottom side.



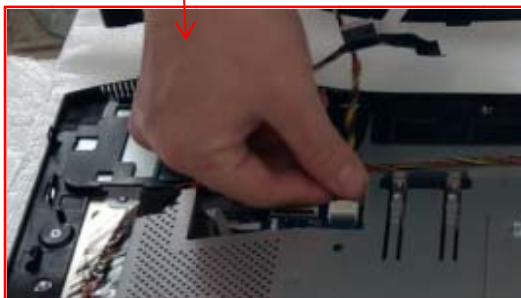
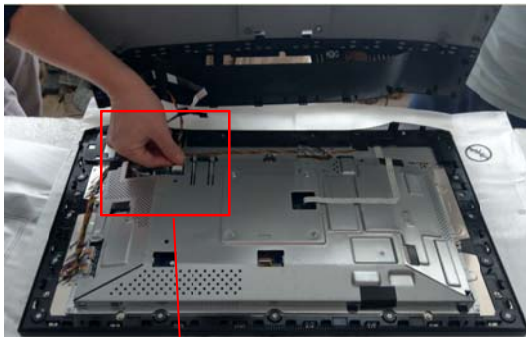
4).Disassemble Rear Cover from middle frame.



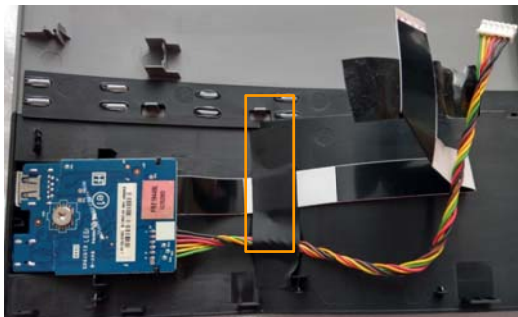
- S5** Remove the tape which fixed USB FFC cable and USB wire on panel.



- S6** Remove USB FFC cable and USB wire from I/F BD.



- S7** Tear off the tape from Rear Cover

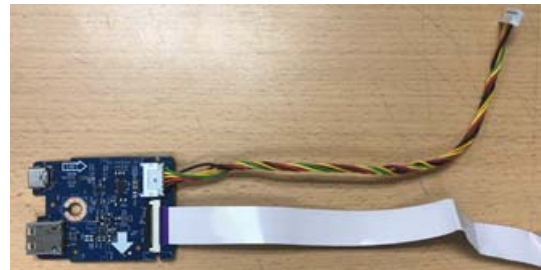


- S8** Unlock a screw on USB BD and take off USB BD from Rear Cover



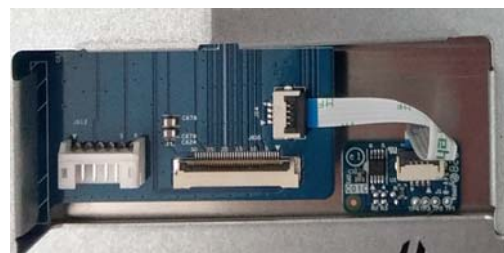
(Screw Torque: 3.5~4.0kgf)

- S9** Remove USB FFC cable and USB wire from USB BD.

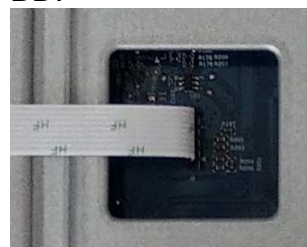


- S10** Remove Sensor BD wire from I/F BD and Sensor BD

Disassemble SENSOR BD from panel.



- S11** Remove Control BD wire from I/F BD.



S12 Remove 4 black tapes from Panel.



S13 Remove long and short backlight wire from LED Driver BD.

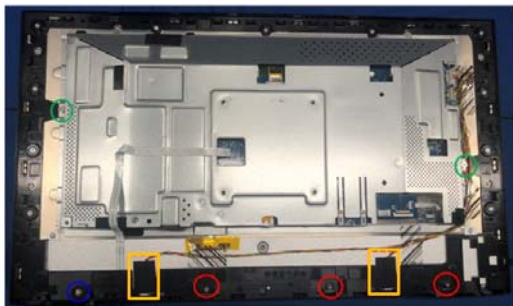


S14 Remove 2 tapes which fixed backlight wire from panel and middle frame. (See Orange mark)

Remove long and short backlight wire from panel.

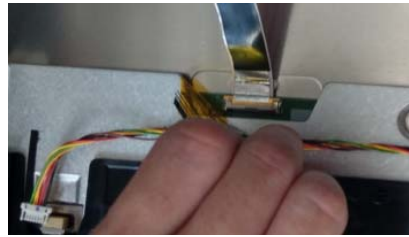
Unlock 1 TP -S screw (See Blue mark) and disassemble a PANEL BOSS from Middle Frame.

Unlock screws on Middle Frame
 a. FHP screws*2. (See Green mark)
 b. MF BASE screws*3 (See Red mark)



(TP-S Screw Torque: 6.5±0.5kgf)
 (FPH screw and base Screw Torque: 3.5~4.0kgf)

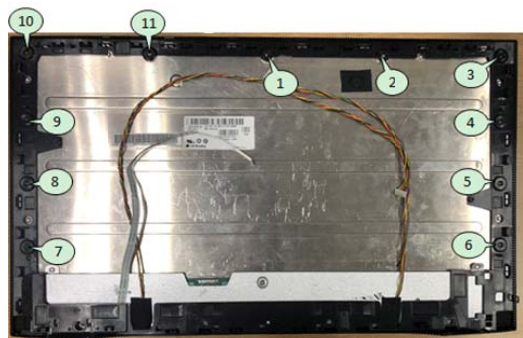
S15 Tear off the yellow tape from Panel and disassemble LVDS cable from Panel.



S16 Take off Main SHD from Panel.



S17 Unlock 11 screws on Middle frame

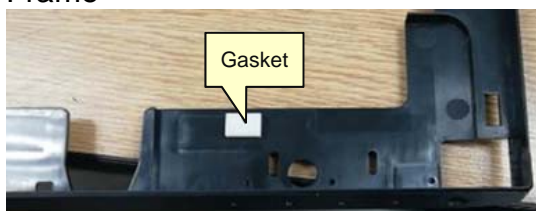


(Screw Torque: 3.5~4.0kgf)

- S18** Take off Middle frame from Panel
Remove 3 tapes from panel



- S19** Remove 1 Gasket from Middle Frame



- S20** Unlock 3 screws on middle frame to take off Control BD ASSY.



(Screw Torque: 1~1.2kgf)

- S21** Tear off Control BD Mylar from Control BD and take off Control BD FFC cable.

Unlock 4 screws on Control BD to disassemble Control BD from Key Button.

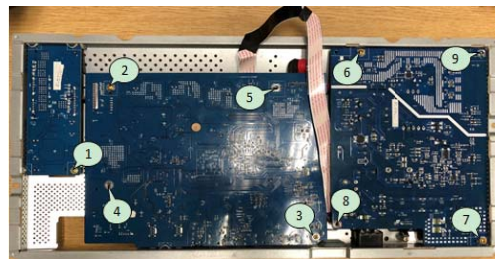


(Screw Torque: 1.4~1.45kgf)

- S22** Take off Mylar from SPS BD.



- S23** Unlock 9 PCBA screws.



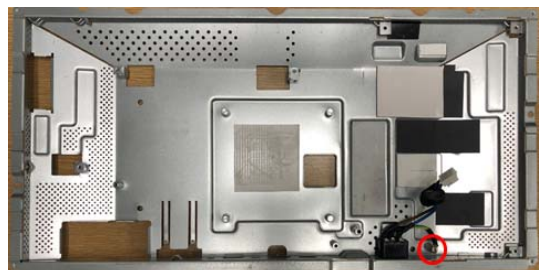
(Screw Torque: 8.5±0.5kgf)

- S24** Disassemble LED Driver BD, I/F BD and SPS BD from Main SHD.

Remove all cables and tapes from LED Driver BD, I/F BD and SPS BD.

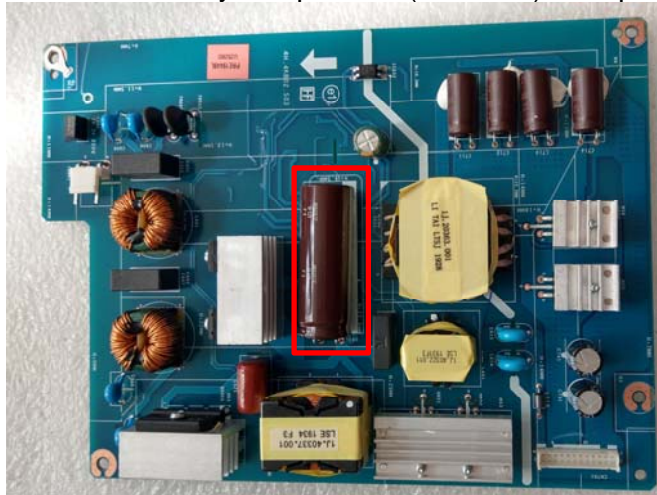


- S25** Unlock 1 Grounding Screw and disassemble AC wire from Main SHD.



(Screw Torque: 6.5±0.5kgf)

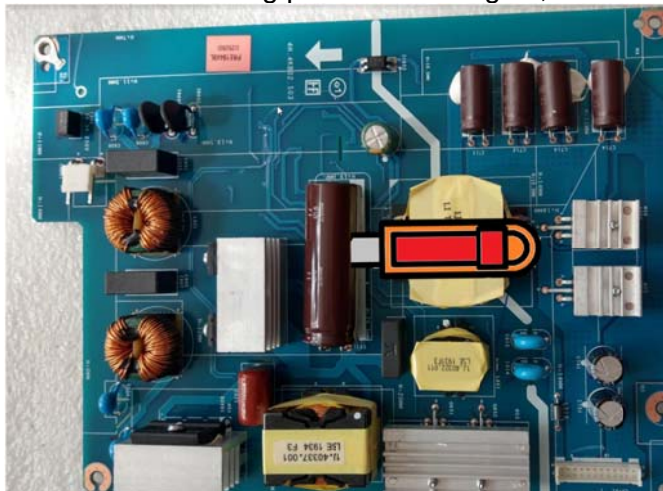
S26 Remove electrolyte capacitors (red mark) from printed circuit boards



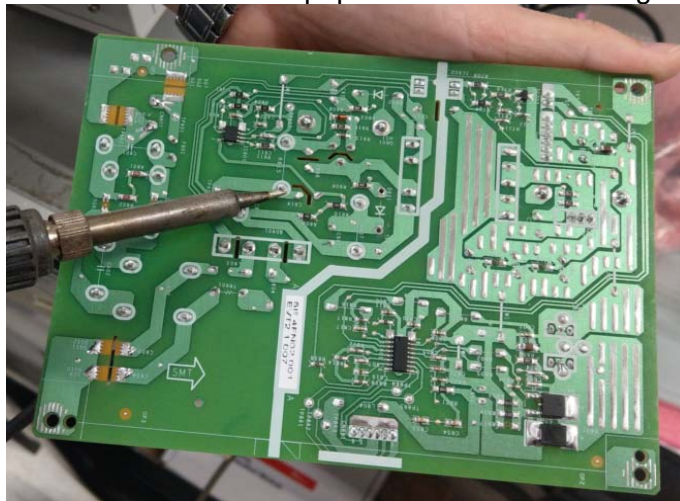
S26-1 Cut the glue between bulk cap. and PCB with a knife



S26-2 Ensure cutting path within the glue, don't touch bulk cap. or PCB



S26-3 Take out bulk cap. pin solder with soldering iron and absorber



S26-4 Lift the bulk cap. up and away from the PCB



2. Product material information

The following substances, preparations, or components should be disposed of or recovered separately from other WEEE in compliance with Article 4 of EU Council Directive 75/442/EEC.

Capacitors / condensers (containing PCB/PCT)	No used
Mercury containing components	No used
Batteries	No used
Printed circuit boards (with a surface greater than 10 square cm)	Product has printed circuit boards (with a surface greater than 10 square cm)
Component contain toner, ink and liquids	No used
Plastic containing BFR	No used
Component and waste contain asbestos	No used
CRT	No used
Component contain CFC, HCFC, HFC and HC	No used
Gas discharge lamps	No used
LCD display > 100 cm ²	Product has an LCD greater than 100 cm ²
External electric cable	Product has external cables
Component contain refractory ceramic fibers	No used
Component contain radio-active substances	No used
Electrolyte capacitors (height > 25mm, diameter > 25mm)	Product has electrolyte capacitors (height >25mm, diameter > 25mm)

3. Tools Required

List the type and size of the tools that would typically can be used to disassemble the product to a point where components and materials requiring selective treatment can be removed.

Tool Description:

- Screwdriver
- Scraper Bar
- Penknife
- Soldering iron and absorber