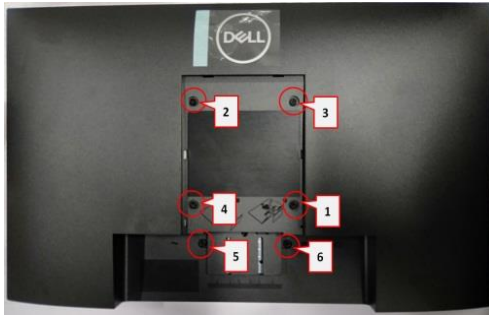


Chapter 8-TEARDOWN INSTRUCTION

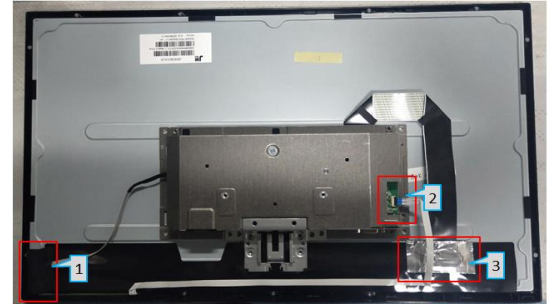
S1

- Remove the back cover screws
 - Take the electric screwdriver and remove the back cover screws at positions "1~6"
 - Torque of electric screwdriver: $12.0 \pm 0.5 \text{kgf.cm}$, Screwdriver head: Cross



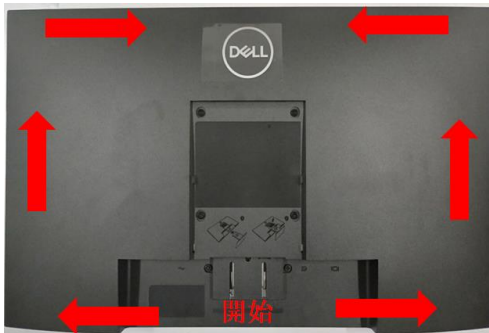
S4

- Tear the aluminum foil & remove the cable
 - First tear off the aluminum foil at "3" position, and then pull out the cable (Hold the small hook on both sides of the cable and pull out the cable)



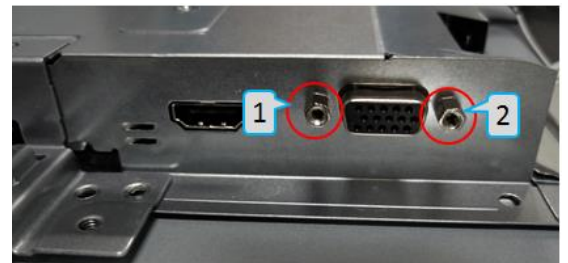
S2

- Remove the rear cover
 - Pry off the back cover of the machine with the aid of the dismantling fixture, and Remove the back cover in the following order: ground side → both sides → sky side



S5

- Remove the VGA screw
 - Remove the "1" and "2" position screws with the electric screwdriver;
 - Torque of electric screwdriver: $4.5 \pm 0.5 \text{kgf.cm}$ Screwdriver head: Inner hexagon



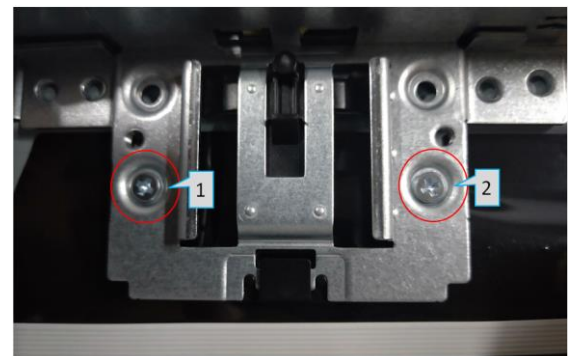
S3

- Pull out lamp line & key board line
 - First tear off the acetate tape at "1" position, and then pull out the lamp line (hold the pin end of the lamp line to pull out the connector)
 - Pull out the "2" position key board line (first break off the key line connector, and then pull out the key board line)



S6

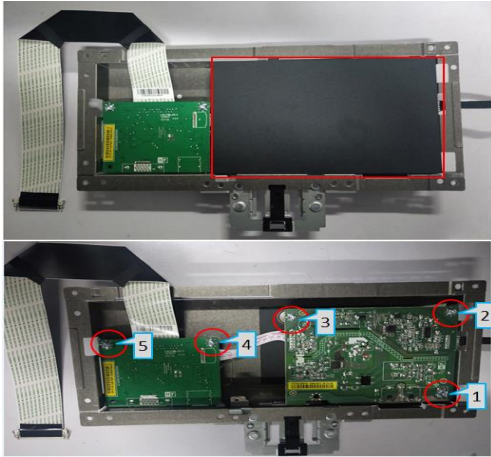
- Remove the fixed iron frame screw
 - Remove the "1" and "2" position screws with the electric screwdriver
 - Torque of electric screwdriver: $3.5 \pm 0.5 \text{kgf.cm}$, Screwdriver head: Cross



S7

7. Remove PCB board

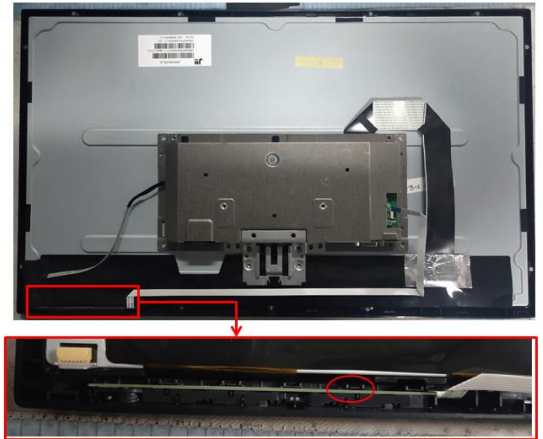
- a: Remove Mylar (remove the black Mylar in the Red Square)
- b: Remove the "1" ground screw and the "2 ~ 5" locking screw with the electric driver;
- c: Torque of electric screwdriver: 5.5 ± 0.5 kgf.cm, Screwdriver head: Cross



S10

10. Remove the key board

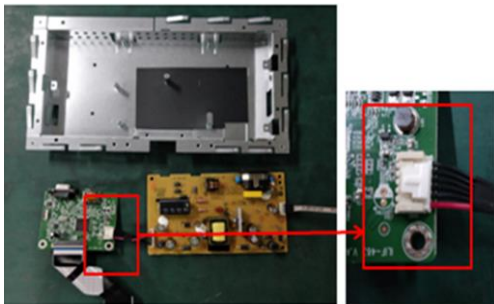
- a: Take out the key board from the front bezel (first gently break the hook in the red circle, then take out the key board)



S8

8. Separate PCB board

- a: Remove the power board & mainboard
- b: Separate power & mainboard



S11

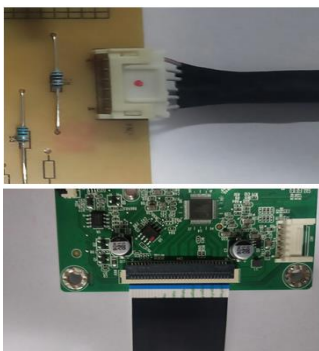
- a. Remove electrolyte capacitor >25mm height (squared in red) from printed circuit boards.
- b. Cut the glue between bulk cap and PCBA with knife – ensure cutting path within the glue, don't touch bulk cap and PCBA.



S9

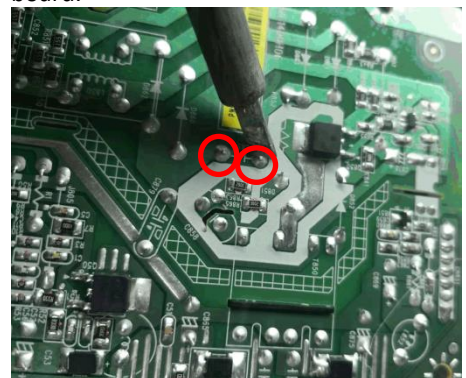
9. Take the cable & lamp line

- a: Remove the cable from the mainboard (first open the interface cover and then pull out the cable)
- b: Pull out the lamp line from the power board (hold the lamp line connector to pull out the lamp line)



S12

- a. Take out the capacitor pin solder with soldering iron.
- b. Lift the bulk capacitor away from power board.



1. Product Material Information

The following substances, preparation, or components should be disposed of or recovered separately from other WEEE in compliance with Article 4 of EU Council Directive 75/422/EEC.

Capacitors / Condensers (containing PCB/PCT)	Not used
Mercury containing components	Not used
Batteries	Not used
Printed circuit boards (with surface greater than 10 square cm)	Product has printed circuit boards (with surface greater than 10 square cm)
Component contain toner, ink and liquids	Not used
Plastic containing BFR	
Component and waste contain asbestos	Not used
CRT	Not used
Component contain CFC, HCFC, HGC and HC	Not used
Gas discharge lamps	Not use
LCD display > 100 cm2	Product LCD greater than 100cm2
External electric cable	Product has external cables
Component contain refractory ceramic fibers	Not used
Component contains radio-active substances	Not used
Electrolyte capacitors (height > 25mm, diameter >25mm)	Product has electrolyte capacitors (height > 25mm)

2. Tools Required

List the type and size of the tools that would typically can be used to disassemble the product to a point where components and materials requiring selective treatment can be removed.

Tool Description:

- Screwdriver (Philip head with Φ 5 mm & Φ 3 mm)
- Screwdriver (Hexagonal to remove VGA connectivity)
- Soldering iron
- Knife