

1. Disassembly Procedures

S1 Turn off the monitor.

S2 Place the monitor on a soft cloth or cushion.

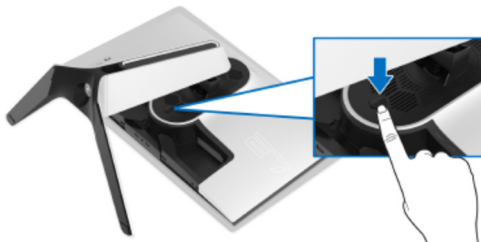
Carefully slide and remove the I/O cover from the monitor



S3 Disconnect the cables from the monitor and slide them out through the cable-management slot on the stand riser.



S4 Press and hold the stand release button.



S5 Lift the stand up and away from the monitor

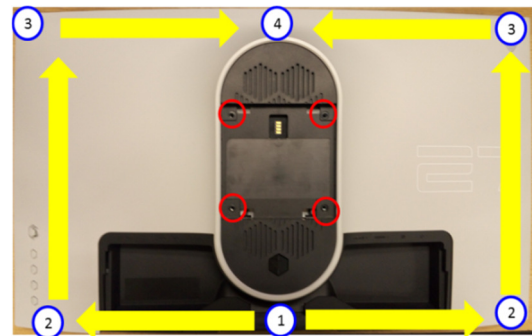


S6 Unlock 4 screws on Rear Cover

Use hands or scraper bar to disassemble Rear Cover from monitor

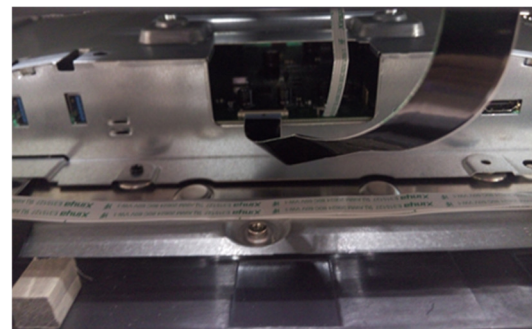
Notice the disassembly order :

Bottom Side=>Right/ Left Side=> Top Side



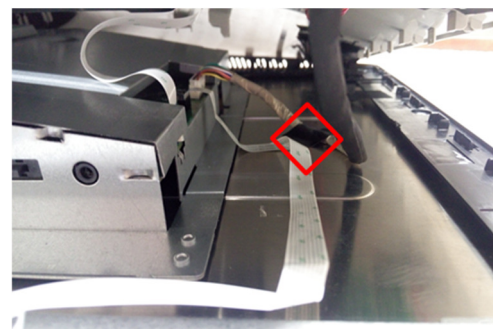
(Screw Torque:10.5±1kgf)

S7 Remove USB FFC Cable and Audio FFC cable from the I/F BD

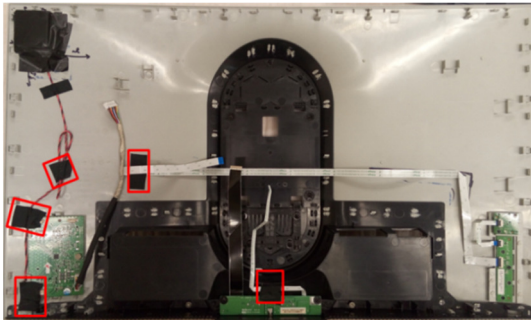


S8 Remove CTRL FFC Cable from I/F BD

Tear off an adhesive tape and remove the LED Driver BD wire from I/F BD



S9 Tear off all adhesive tapes from Rear Cover

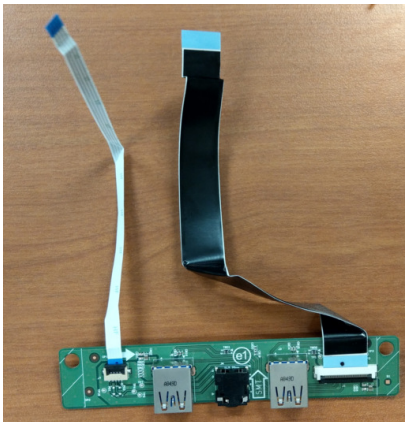


S10 Unlock 2 USB screws to disassemble USB BD from Rear Cover

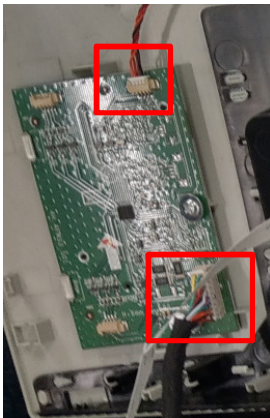


(Screw Torque: 3.0-3.5kgf)

S11 Disassemble "USB FFC cable" and "Audio FFC cable" from USB BD



S12 Unplug wires from LED Driver BD

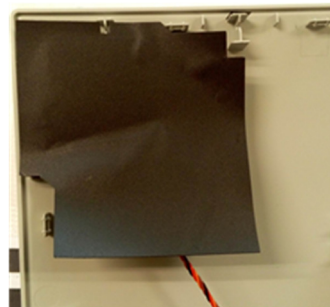


S13 Unlock 1 screw to disassemble LED Driver BD from Rear Cover

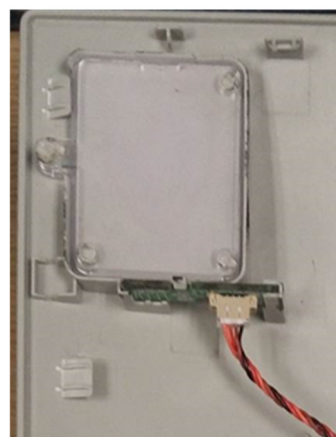


(Screw Torque: 3.0-3.5kgf)

S14 Tear off "MYLAR HEAD LOGO" from LED Logo Lens

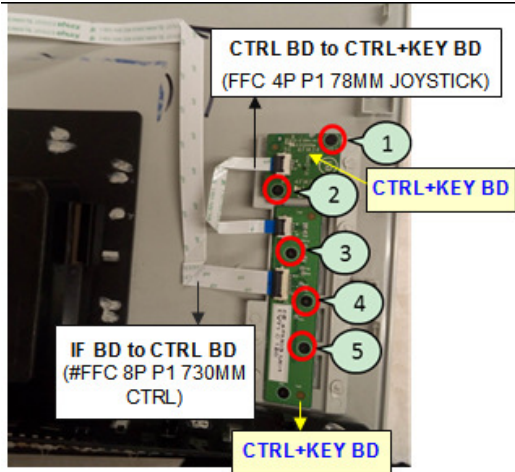


S15 Unplug wire from LED BD and disassemble LED BD from Rear Cover



S16 Remove FFC cables from Rear Cover, CTRL BD and CTRL+KEY BD

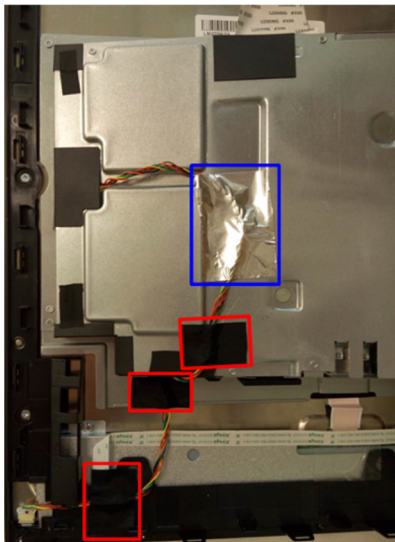
Unlock 5 screws to disassemble CTRL BD and CTRL+KEY BD from Rear Cover



(Screw Torque: 1.05-1.15Kgf)

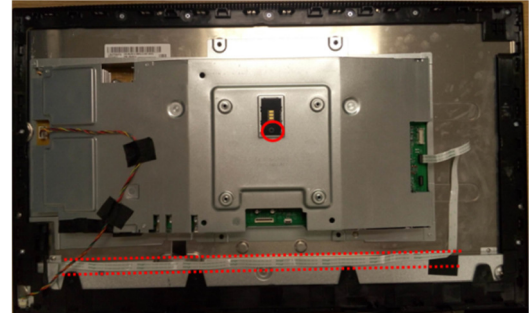
S17 Tear off 3 adhesive tapes and 1 AL foil from Backlight Wire on the SHD

Disassemble the side Mylar from the SHD and unplug Backlight Wire form SPS BD



S18 Unplug Power CTRL FFC cable from I/F BD and tear off Power CTRL FFC cable from the panel

Unlock 1 screw to disassemble "Docking BD" from SHD

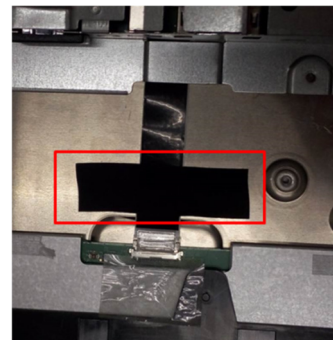
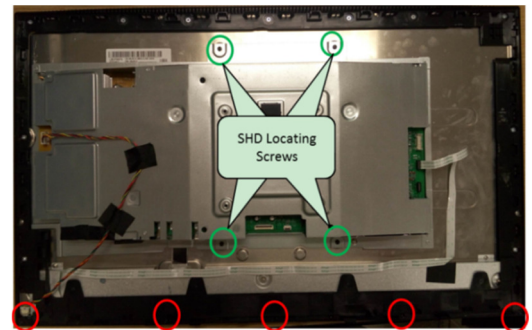


S19 Unlock 4 screws on SHD

Tear off the long adhesive tape from "FFC EDP" on Panel

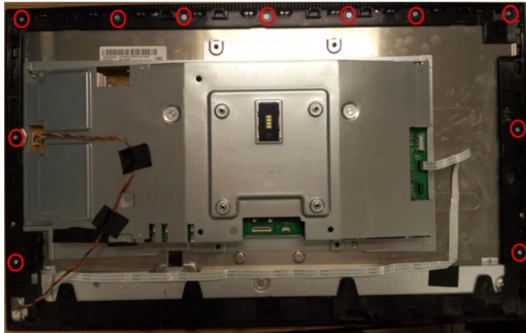
Unplug "FFC EDP" from the panel

Unlock 5 TRIM screws to disassemble "BZL CHIN"



(Screw Torque: SHD: 7±1kgf
Bezel Chin: 3.5-4.0Kgf)

S20 Unlock 11 screws on middle frame

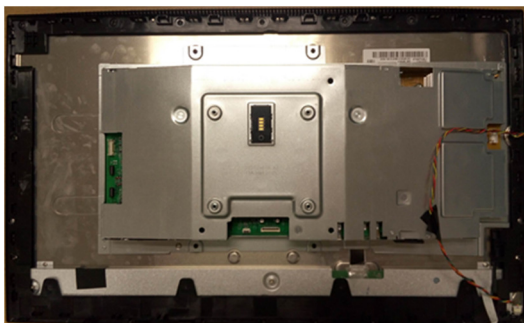


(Screw Torque: 3.5-4 Kgf)

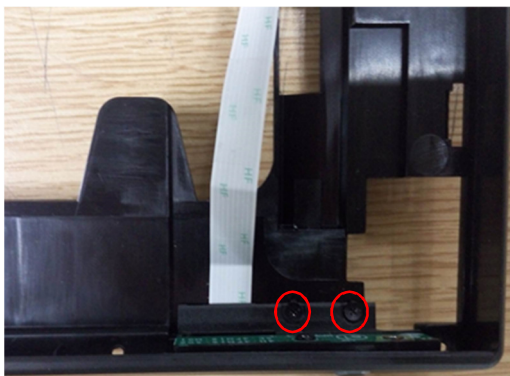
S21 Tear off the gasket from Middle Frame



S22 Disassemble Middle Frame from panel

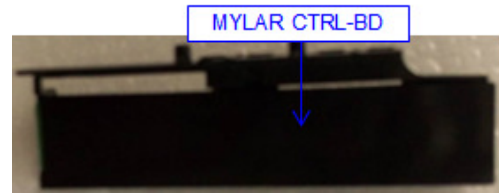


S23 Unlock 2 screws to disassemble Power Button module from middle frame

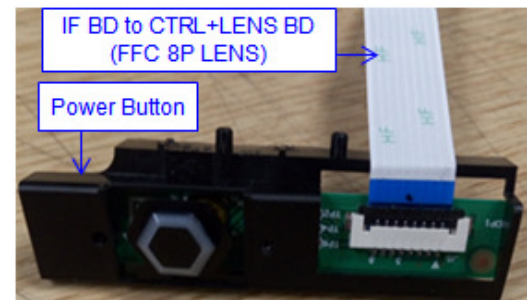


(Screw Torque: 1.05-1.15 Kgf)

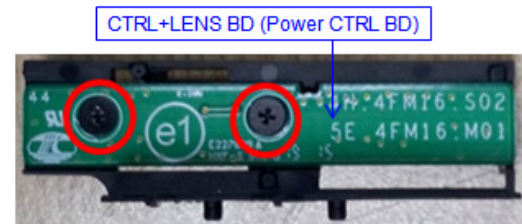
S24 Disassemble "MYLAR CTRL-BD" from "CTRL+LENS BD" (Power CTRL BD)



S25 Unplug Power CTRL FFC cable from "CTRL+LENS BD" (Power CTRL BD)

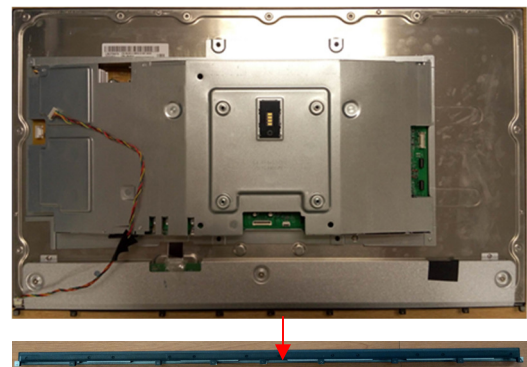


S26 Unlock 2 screws to disassemble "CTRL+LENS BD" (Power CTRL BD) from Power Button

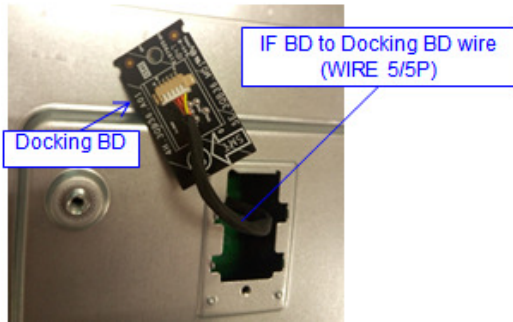


(Screw Torque: 1.05-1.15 Kgf)

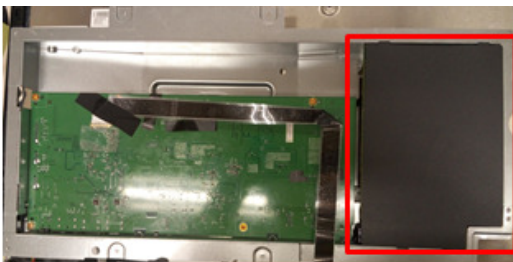
S27 Disassemble "BZL CHIN" from the panel



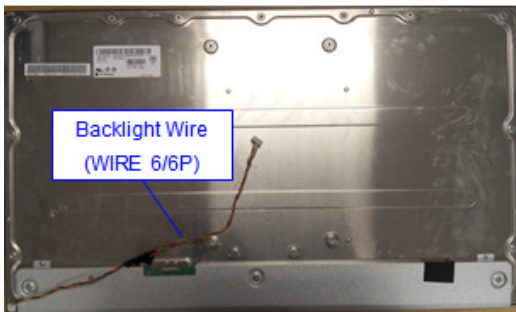
S28 Disassemble "I/F BD to Docking BD wire" from Docking BD



S29 Assemble "MYLAR PWR-BD" to SHD

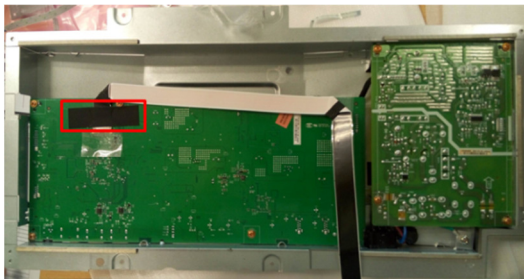


S30 Unplug Backlight Wire from Panel

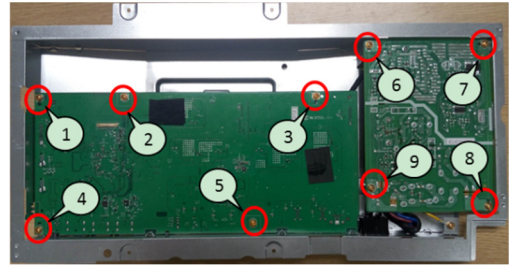


S31 Tear off the long adhesive tape from the I/F BD

Unplug "FFC EDP" from I/F BD



S32 Unlock 9 PCBA screws

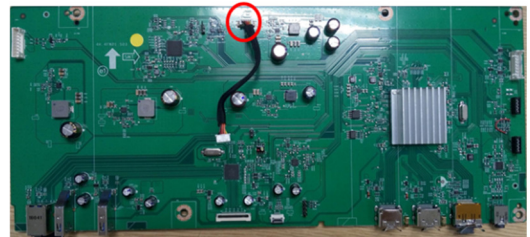


(Screw Torque: 10±0.5kgf)

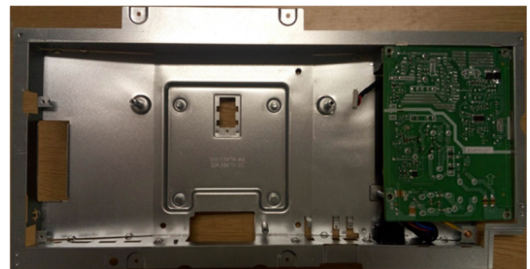
S33 Disassemble I/F BD from the SHD



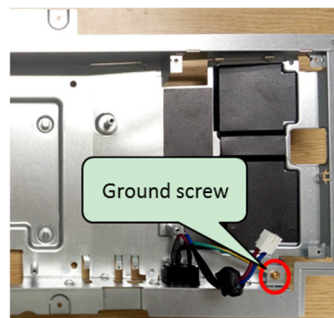
S34 Disassemble wire from I/F BD



S35 Disassemble SPS BD from SHD and disassemble "AC Socket Wire" from SPS BD

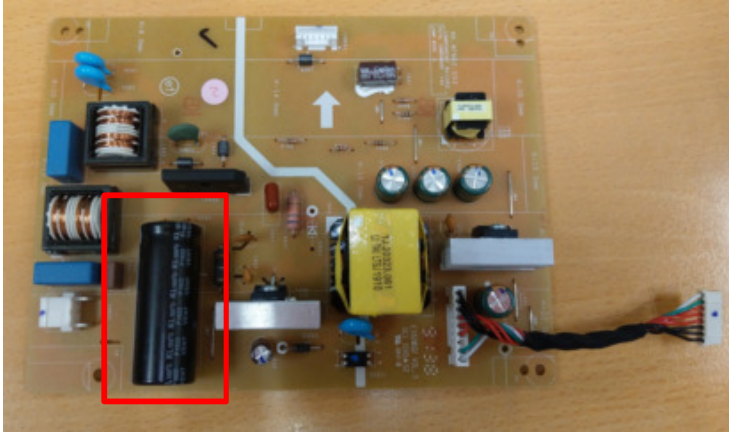


S36 Unlock the ground screw and disassemble power socket from SHD

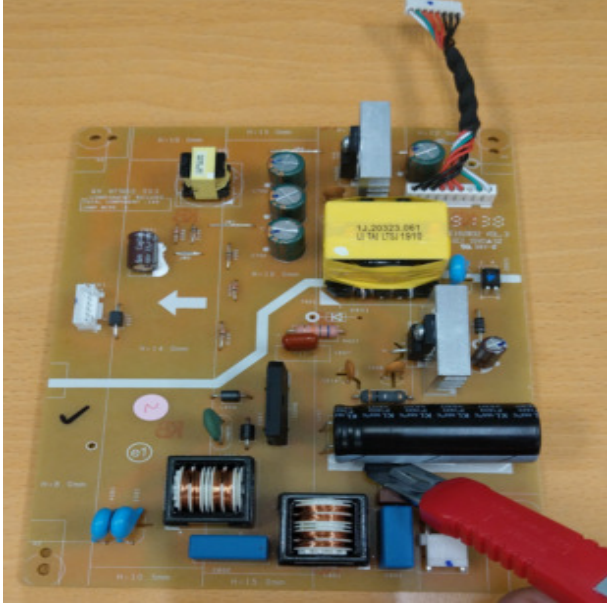


(Screw Torque: 10±0.5kgf)

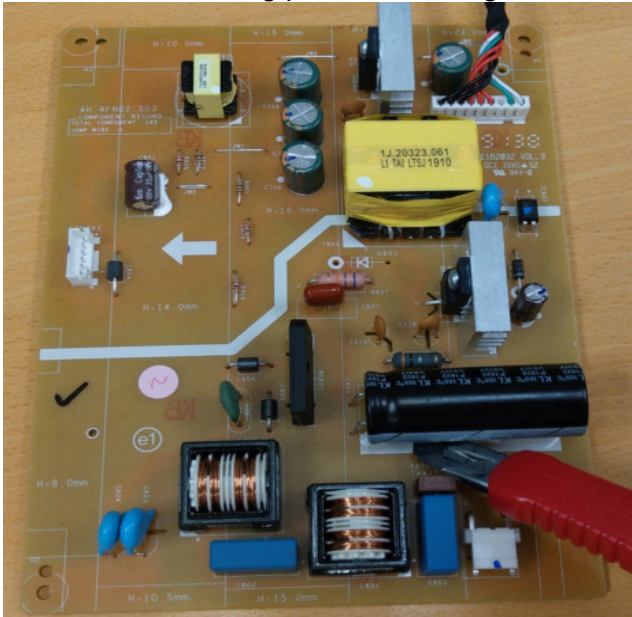
S37 Remove electrolyte capacitors (red mark) from printed circuit boards



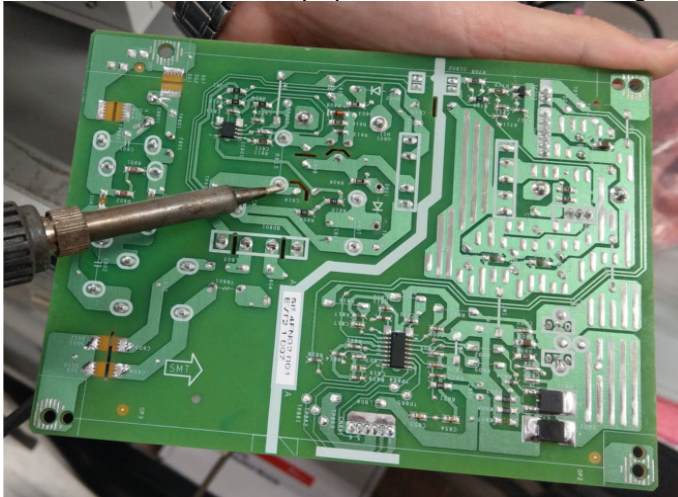
S37-1 Cut the glue between bulk cap. and PCB with a knife



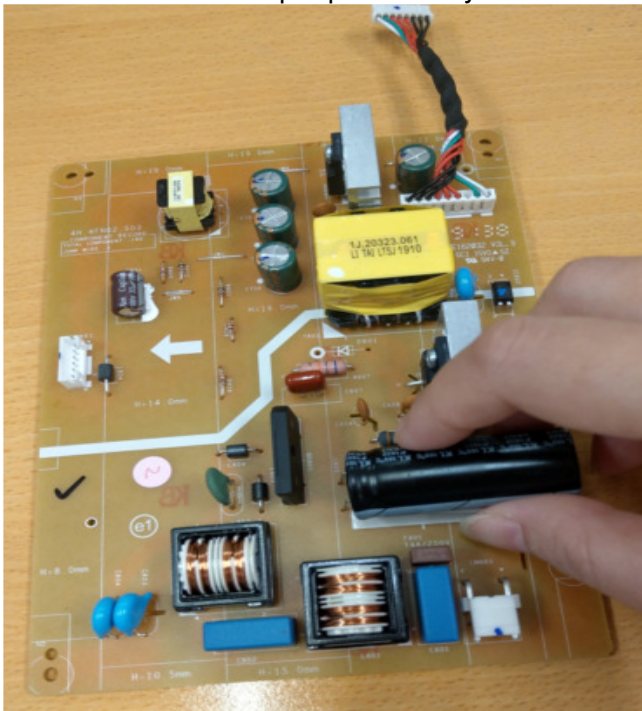
S37-2 Ensure cutting path within the glue, don't touch bulk cap. or PCB



S37-3 Take out bulk cap. pin solder with soldering iron and absorber



S37-4 Lift the bulk cap. up and away from the PCB



2. Product material information

The following substances, preparations, or components should be disposed of or recovered separately from other WEEE in compliance with Article 4 of EU Council Directive 75/442/EEC.

Capacitors / condensers (containing PCB/PCT)	No used
Mercury containing components	No used
Batteries	No used
Printed circuit boards (with a surface greater than 10 square cm)	Product has printed circuit boards (with a surface greater than 10 square cm)
Component contain toner, ink and liquids	No used
Plastic containing BFR	No used
Component and waste contain asbestos	No used
CRT	No used
Component contain CFC, HCFC, HFC and HC	No used
Gas discharge lamps	No used
LCD display > 100 cm ²	Product has an LCD greater than 100 cm ²
External electric cable	Product has external cables
Component contain refractory ceramic fibers	No used
Component contain radio-active substances	No used
Electrolyte capacitors (height > 25mm, diameter > 25mm)	Product has electrolyte capacitors (height >25mm, diameter > 25mm)

3. Tools Required

List the type and size of the tools that would typically can be used to disassemble the product to a point where components and materials requiring selective treatment can be removed.

Tool Description:

- Screwdriver
- Scraper Bar
- Penknife
- Soldering iron and absorber