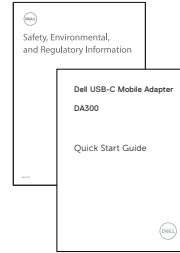
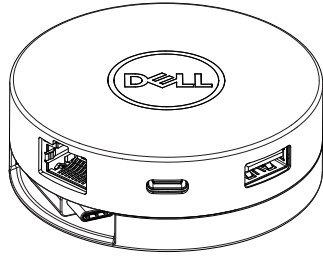


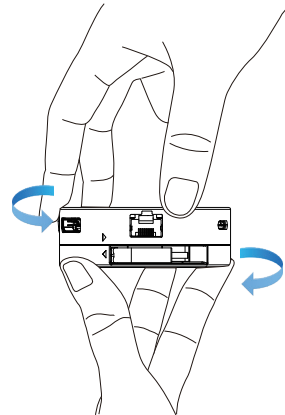
# Dell USB-C Mobile Adapter

DA300

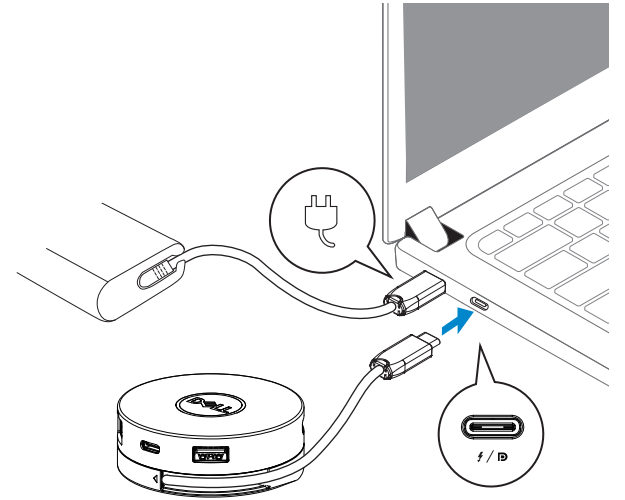
## Quick Start Guide



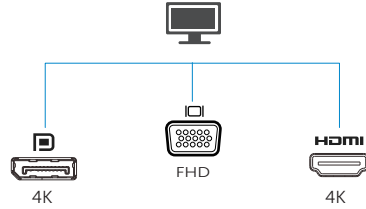
1



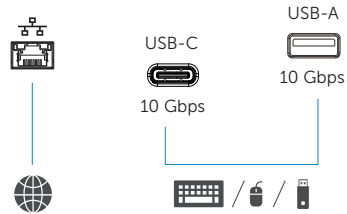
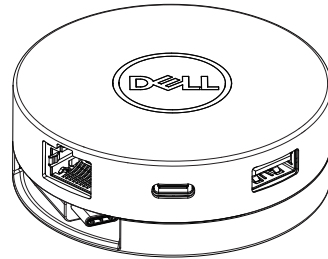
2



**NOTE:** Power delivery pass-through is not supported on the USB Type-C port on the adapter (DA300).



NOTE: The mobile adapter supports only one display at a time.



[Dell.com/support](https://Dell.com/support)  
[Dell.com/contactdell](https://Dell.com/contactdell)  
[Dell.com/regulatory\\_compliance](https://Dell.com/regulatory_compliance)

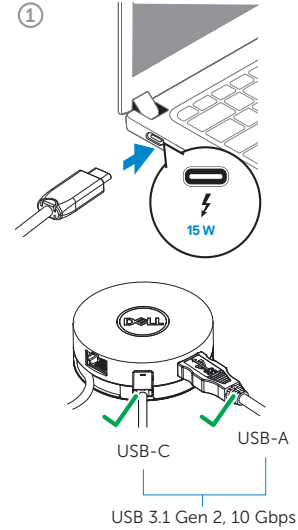
© 2017-2018 Dell Inc. or its subsidiaries.  
 2018-04

EAC  
 ONT8N Rev. A01

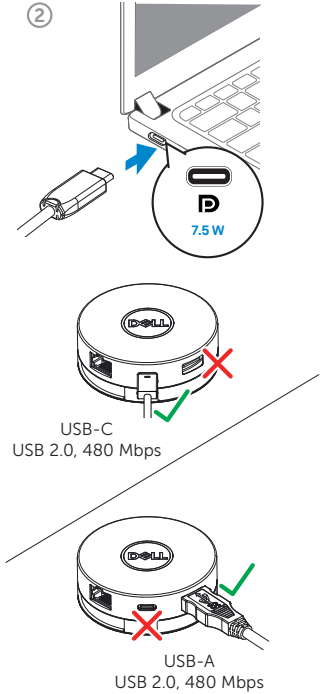


## USB downstream port behavior

When connecting to a Thunderbolt port



When connecting to a USB-C (DisplayPort Alt Mode)



NOTE: For more information, see *User's Guide* at [Dell.com/support](https://Dell.com/support).