

Dell SE2716H Monitor Dell Display Manager User's Guide

Model: SE2716H
Regulatory model: SE2716Ht





NOTE: A NOTE indicates important information that helps you make better use of your computer.

Copyright © 2015 Dell Inc. All rights reserved. This product is protected by U.S. and international copyright and intellectual property laws.

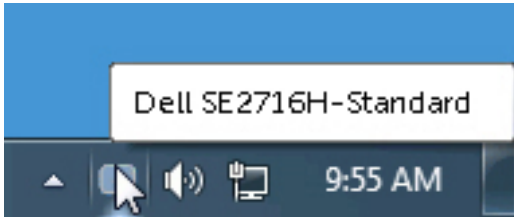
Dell™ and the Dell logo are trademarks of Dell Inc. in the United States and/or other jurisdictions. All other marks and names mentioned herein may be trademarks of their respective companies.

Contents

Overview	4
Using the Quick Settings Dialog	5
Setting Basic Display Functions	6
Assigning Preset Modes to Applications	7
Applying Energy Conservation Features	8
Organizing Windows with Easy Arrange	9

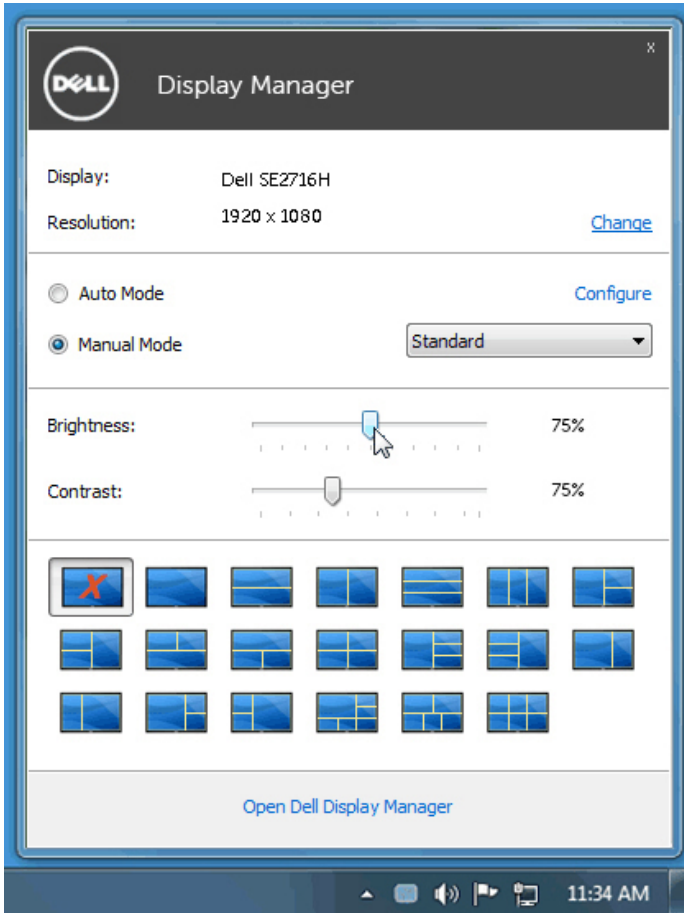
Overview

Dell Display Manager is a Windows application used to manage a monitor or a group of monitors. It allows manual adjustment of the displayed image, assignment of automatic settings, energy management, window organization, image rotation, and other features on select Dell monitors. Once installed, Dell display manager runs each time the computer starts and its icon is placed in the notification tray. Information about monitors connected to the computer is displayed when you hover the mouse pointer over the notification tray icon.



Using the Quick Settings Dialog

Clicking Dell Display Manager's notification tray icon opens the **Quick Settings** dialog box. When more than one supported Dell model is connected to the system, a specific target monitor can be selected using the menu provided. The **Quick Settings** dialog box allows convenient adjustment of the monitor's brightness and contrast levels. You can manually select a preset mode or enable automatic selection of a preset mode depending on the active application.

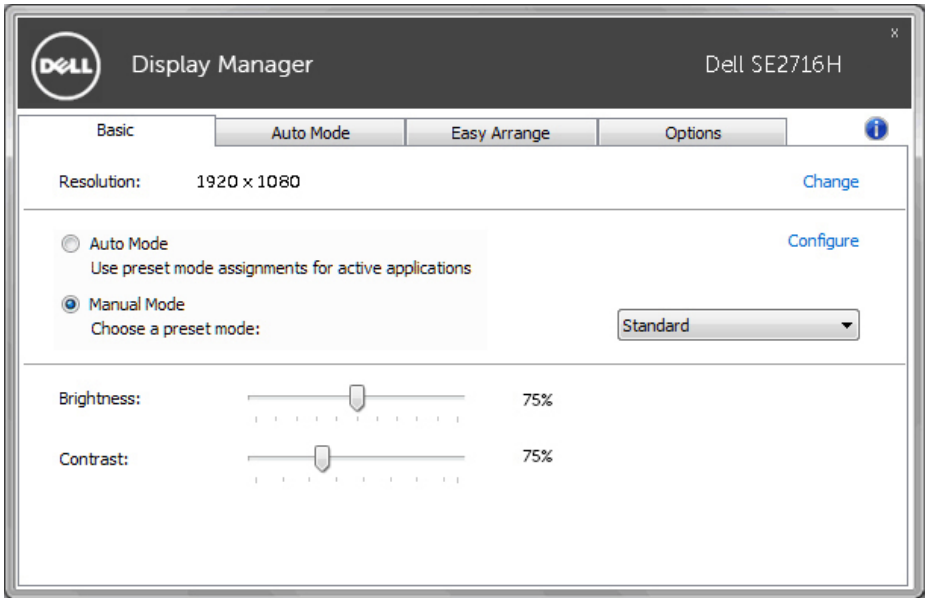


The **Quick Settings** dialog box also provides access to Dell display manager's advanced user interface, which is used to adjust basic functions, configure Auto Mode, and access other features.

Setting Basic Display Functions

A preset mode for the selected monitor can be manually applied using the menu on the **Basic** tab. Alternatively, Auto Mode can be enabled. Auto Mode causes your preferred preset mode to be applied automatically when specific applications are active. A message momentarily appears on the screen showing the selected preset mode.


The selected monitor's brightness and contrast can also be directly adjusted from the **Basic** tab.



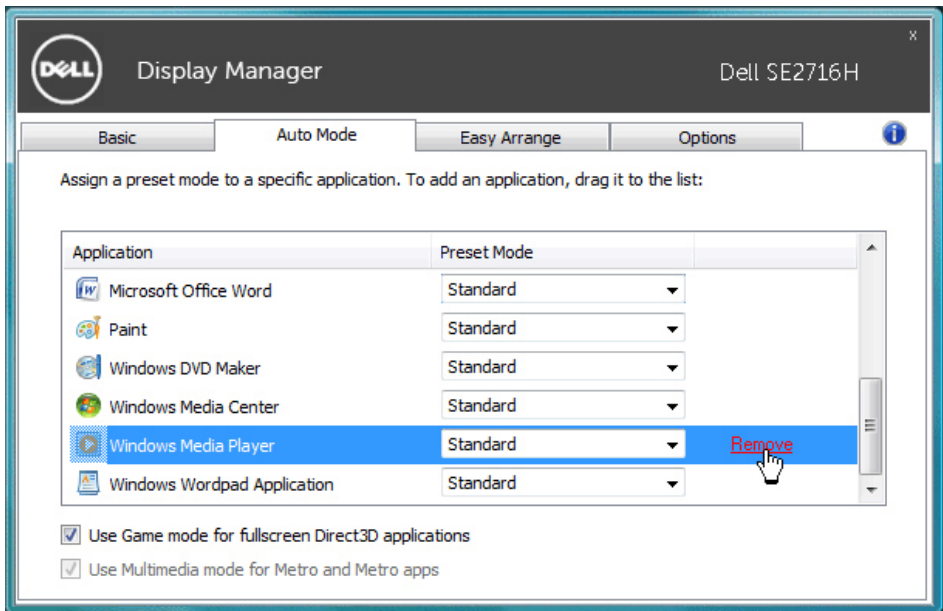
Assigning Preset Modes to Applications

The **Auto Mode** tab allows you to associate a specific preset mode with a specific application, and apply it automatically. When Auto Mode is enabled, Dell Display Manager automatically switches to the corresponding preset mode whenever the associated application is activated. The preset mode assigned to a particular application may be the same on each connected monitor, or it can vary from one monitor to the next.

Dell Display Manager is pre-configured for many popular applications. To add a new application to the assignment list, simply drag the application from the desktop, Windows Start Menu, or elsewhere, and drop it onto the current list.

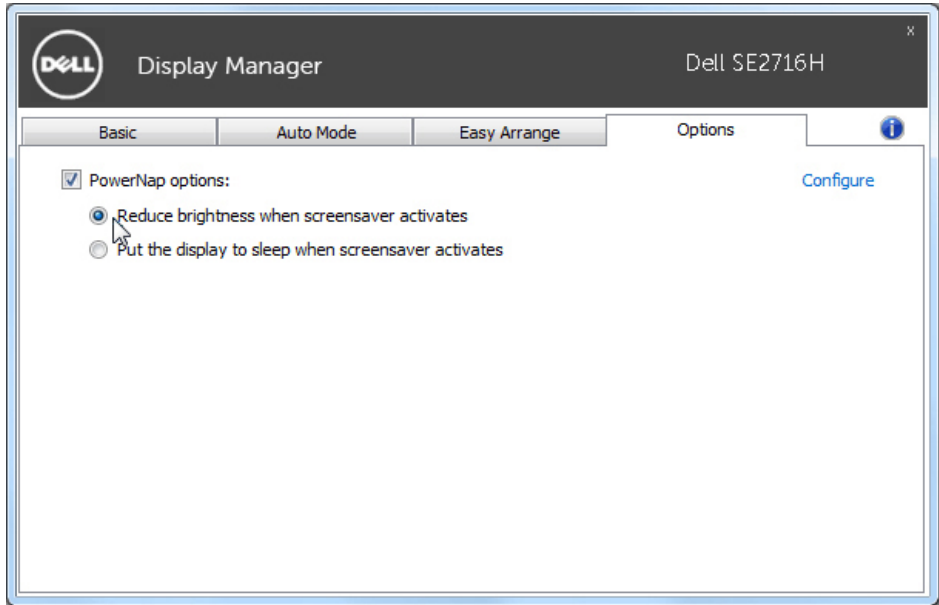
 **NOTE:** Preset mode assignments targeting batch files, scripts, and loaders, as well as non-executable files such as zip archives or packed files, are not supported and will be ineffective.

In addition an option can be enabled that activates the **Game** preset mode when a Direct3D application is run in full-screen mode. To override this behavior for individual game titles, add them to the assignment list with a different Preset Mode. Applications present in the assignment list take priority over the general Direct3D setting.



Applying Energy Conservation Features

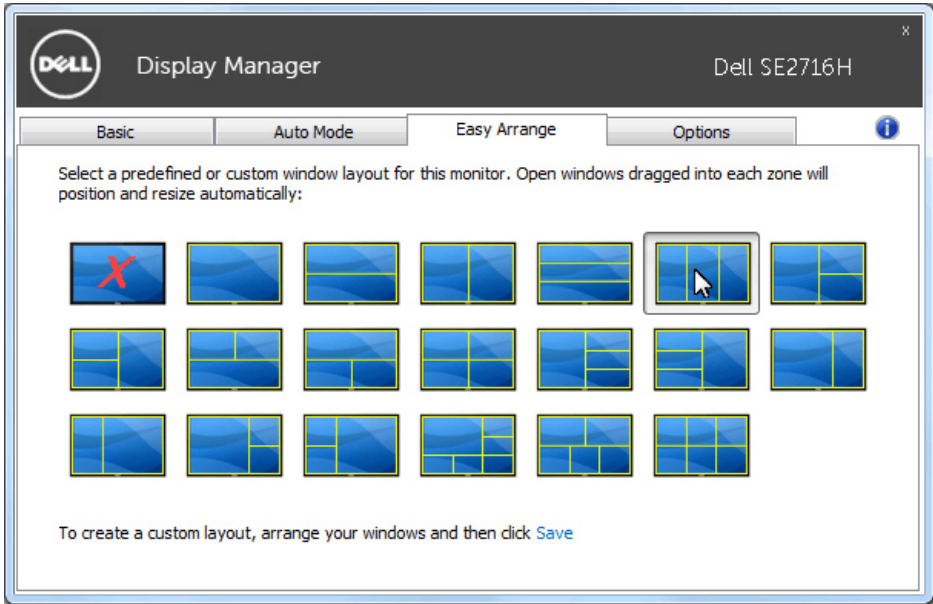
On supported Dell models, an **Options** tab is available to provide PowerNap energy conservation options. When the screensaver activates, the monitor's Brightness can automatically be set to minimum level or the monitor can be put to sleep in order to save additional power.



Organizing Windows with Easy Arrange

Some Dell models feature Easy Arrange, which allows the selected monitor's desktop to be organized into various predefined or custom window layouts. When Easy Arrange is enabled, windows can easily be repositioned and resized automatically to fill specific regions within a window layout.

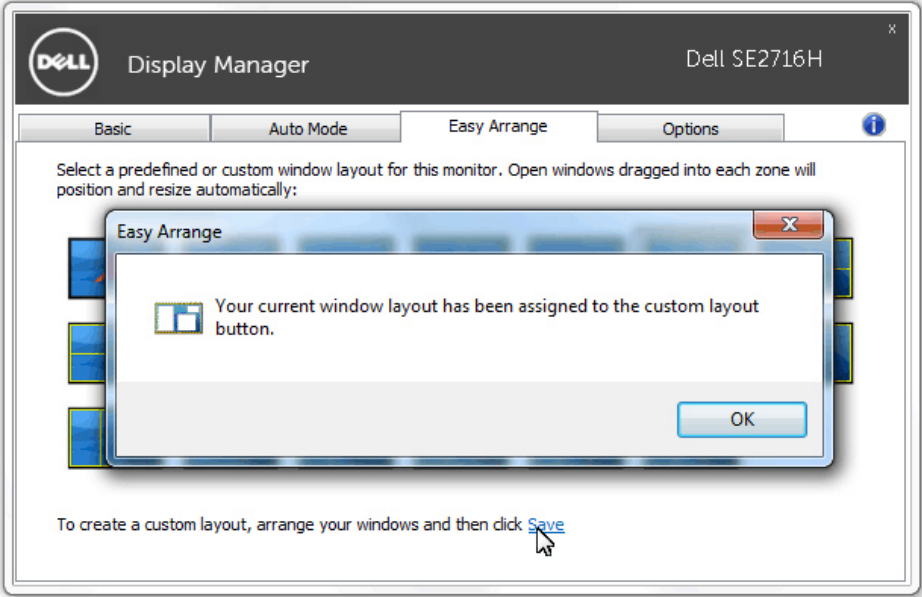
To get started with **Easy Arrange**, choose a target monitor and select one of the predefined layouts. The regions for that layout are displayed momentarily on the monitor. Next, drag an open window across the monitor. While the window is being dragged, the current window layout is displayed and an active region gets highlighted as the window passes over it. At any time, drop the window into the active region to place the window in that region.



To create a custom window layout, size and position the windows (maximum 10) on the desktop and then click the **Save** link in **Easy Arrange**. The size and position of the windows is saved as a custom layout and the custom layout icon is created.



NOTE: This option does not save or remember the applications that are open. Only the size and position of the windows is saved..



To use the custom layout, select the custom layout icon. To delete the currently saved custom layout, close all windows on the desktop and then click the **Save** link in **Easy Arrange**.

