

**Dell C5519Q**  
**Dell Display Control**  
**User's Guide**



**Copyright © 2018 Dell Inc. or its subsidiaries. All rights reserved.** Dell, EMC, and other trademarks are trademarks of Dell Inc. or its subsidiaries. Other trademarks may be trademarks of their respective owners.

2018 – 09

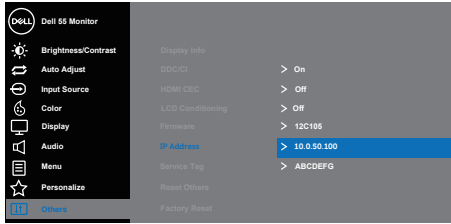
Rev. A00

# Contents

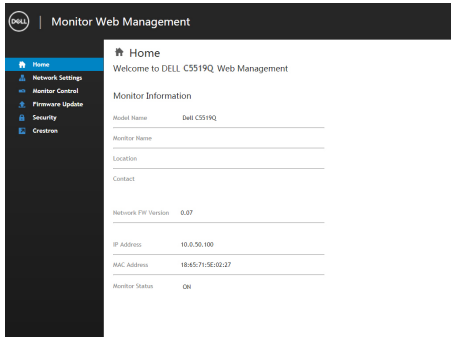
Dell Display Control .....	4
Main window .....	6
Tools Window.....	7
Info window .....	9
Help Desk window.....	10
Emergency Alert .....	10

# Dell Display Control

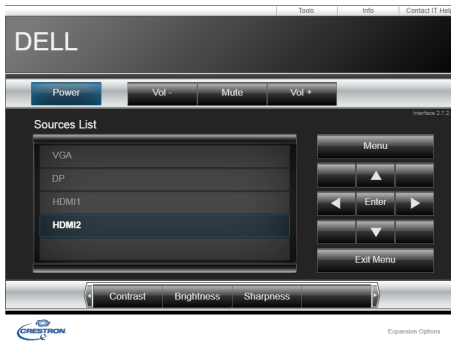
Find the monitor's IP address from OSD menu (Others->IP Address).



Open a web browser and enter the monitor's IP address (e.g. <http://10.0.50.100>) in the address bar. The Home page opens and click Crestron for the control interface.

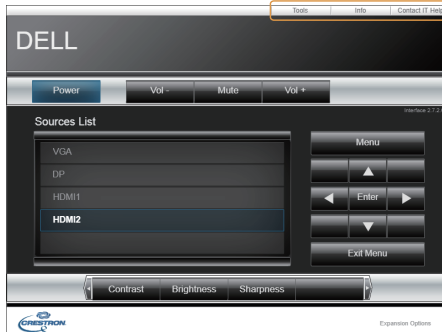


The Main window as shown below is displayed.



You can open a window by clicking the corresponding tab at the top right of the window.

Tab	Description
Tools	Opens <a href="#">Tools window</a> .
Info	Opens <a href="#">Info window</a> .
Contact IT Help	Opens <a href="#">Help Desk window</a> .



# Main window



You can operate the basic controls of the monitor on this screen.

1. Click a button and operate as follows.

Button	Description
Power	Turns the power on/off
Vol -/ Vol +	Adjusts the volume settings
Mute	Toggles Mute on/off

2. Sources List

You can click a button to switch the input channel. The cursor will move according to the currently selected input port.

Button	Description
VGA	Selects input from VGA port.
DP	Selects input from DP port.
HDMI 1	Selects input from HDMI 1 port.
HDMI 2	Selects input from HDMI 2 port.

3. Click a button and operate as follows. To show the hidden buttons, click the ◀/▶ icons if applicable at the left and right ends.

Button	Description
Contrast	Adjusts the contrast setting.
Brightness	Adjusts the brightness setting.
Sharpness	Adjusts the sharpness setting.



- Click the button and operate in the same way as the remote control.

Button	Description
Menu	Assigned the same operation as <b>MENU</b> button.
Enter	Assigned the same operation as <b>ENTER</b> button.
Exit Menu	Assigned the same operation as <b>EXIT MENU</b> button.
▲	Assigned the same operation as ▲ button.
▼	Assigned the same operation as ▼ button.
◀	Assigned the same operation as ◀ button.
▶	Assigned the same operation as ▶ button.

## Tools Window

The screenshot shows the 'Tools' window for a Dell monitor. It contains several configuration sections:

- Crestron Control:** Fields for IP Address (255.255.255.255), IP ID (7), and Port (41724). A 'Send' button is at the bottom.
- Monitor:** Fields for Model Name (Dell C5519Q), Location (Room), and Monitor Name (Name). A 'Send' button is at the bottom.
- DHCP:** A checkbox labeled 'Enabled' is checked. Fields for IP Address (10.0.50.100), Subnet Mask (255.255.0.0), Default Gateway (10.0.0.254), and DNS Server (168.95.1.1). A 'Send' button is at the bottom.
- User Password:** A checkbox labeled 'Enabled' is checked. Fields for New Password and Confirm. A 'Send' button is at the bottom.
- Admin Password:** A checkbox labeled 'Enabled' is checked. Fields for New Password and Confirm. A 'Send' button is at the bottom.

Numbered callouts in the image point to: 1 (IP Address), 2 (Crestron Control section), 3 (DHCP section), 4 (User Password section), and 5 (Admin Password section).

Configures the settings between the monitor and Crestron® control system. Click the **[Exit]** button to return to the Main window.

### 1. Crestron Control

Configures the settings of Crestron® control system devices.

Item	Description
IP Address	Configures the IP address of the control system.
IP ID	Configures the IP ID of the control system.
Port	Specifies the port number used for communication by the control system.

To apply the settings, click the **[Send]** button.



## 2. Monitor

Configures the monitor settings.

Item	Description
Monitor Name	Configures the name of the monitor. The length of the Monitor Name can be up to 22 alphanumeric characters.
Location	Configures the location name of the monitor. You can specify a Location name up to 22 alphanumeric characters.
Assigned To	Configures the user name for the monitor. You can specify a user name up to 22 alphanumeric characters.

The usable symbols are space and the following: !"#%&'()\*+,-./:;<=>?@[\\]^\_`{|}~  
To apply the settings, click the **[Send]** button.

## 3. Network Setting

Configures the network settings of the monitor.

Item	Description
DHCP	Enables DHCP.
IP Address	Configures the IP address when DHCP is disabled.
Subnet Mask	Configures the subnet mask when DHCP is disabled.
Default Gateway	Configures the default gateway when DHCP is disabled.
DNS Server	Configures the DNS server address.

To apply the settings, click the **[Send]** button.

## 4. User Password

Configures the User Password. To prompt the entry of User Password before starting Display control, select the checkbox.

Item	Description
New Password	Configures the password. You can specify a password up to 22 alphanumeric characters. The usable symbols are space and the following: !"#%&'()*+,-./:;<=>?@[\\]^_`{ }~
Confirm	Re-enter the above password for verification. If the password is incorrect, an error message is displayed.

To apply the settings, click the **[Send]** button.

## 5. Admin Password

Configures the Admin Password. To prompt the entry of Admin Password before displaying the Tools window, select the checkbox.

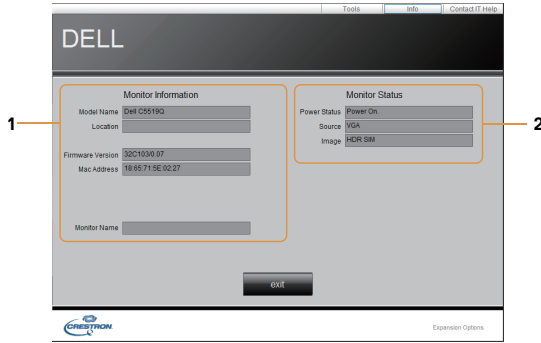
Item	Description
New Password	Configures the password. You can specify a password up to 22 alphanumeric characters. The usable symbols are space and the following: !"#%&'()*+,-./:;<=>?@[\\]^_`{ }~
Confirm	Re-enter the above password for verification. If the password is incorrect, an error message is displayed.





To apply the settings, click the [Send] button.

## Info window



Displays the settings and status of the monitor. Click the [Exit] button to return to the Main window.

### 1. Monitor Information

Item	Description
Model Name	Displays the model name of the monitor.
Location	Displays the the location name of the monitor.
Firmware Version	Displays the version of the monitor firmware.
MAC address	Displays the wired LAN MAC address of the monitor.
Monitor Name	Displays the user name of the monitor.

### 2. Monitor Status

Item	Description
Power Status	Displays the current power status.
Source	Displays the current input signal source.
Image	Displays the current picture mode setting.

**NOTE:** Monitor Name, Location and the user name for Assigned To may appear truncated if they are too long.



## Help Desk window



Sends/receives messages to/from the administrator for Crestron RoomView® Express.

Button	Description
Send	Sends a message.

## Emergency Alert



When the administrator for Crestron RoomView® Express sends out an alert message, it will be displayed on the screen.

